

Outreach



DECEMBER 2022



THE
KILLINGWORTH
CASTLE

Christmas Opening

DECEMBER

21st -Xmas Eve	12-2 / 6.30-8.30pm
Xmas & Boxing Day	Closed
Tues 27-Fri 30	12-2 / 6.30-8.30pm
New Year's Eve	Food 12-3, close 6pm

JANUARY

New Year's Day	Food 12-6, close 10pm
Normal hours until pub holiday	16-24

copy

cherwell graphics

print

design

For your Christmas printing

29 Banbury Road

Kidlington, Oxford, OX5 1AQ

T: 01865 374443 E: info@cherwellgraphics.co.uk



Following last month's appeal, we may have secured a new Delivery Manager for 2023. BUT have had *NO* offers for the position of Advertising Manager.

Advertising Manager.

Income from around 15 advertisers contributes significantly to covering our production costs, allowing the newsletter to be free. Primrose Williamson, who has handled all our advertisers since before anyone can remember, assures me that this is not an onerous duty, sending reminders when required and generally being a friendly point of contact when details change.

If you think you could spare a few hours a year, PLEASE contact me and I can provide more information and answer any questions.

This month's cover ..

Thanks to David Kerry for another great photo. The Robin was voted Britain's National Bird in 2015 and, seemingly, ever present in our garden

Please keep the photos coming in - ***everyone***; Remember...
Outreach depends on **YOUR** contributions.

If you have events, clubs, sports, activities - anything at all, please get in touch and we'll see what we can do.

**Deadline for the January edition - 15th December :
email to outreachwgk@gmail.com**

Mel

By the by....

I had a phone call recently asking if I could put a short item into Outreach about dogs and what they do best! I suggested that the caller might write a short piece and I'd try to fit it in. If you're reading this, please don't think I was being exclusive of your point, but all submissions for inclusions must include the name of the writer - no "*anon of Wootton*".

With no details included, I couldn't even write to explain.
Sorry.



SERVICES
FOR DECEMBER
& THE NEW YEAR

December Services and

Sunday 4th	10.15am	St Mary's, Wootton	"Sunday Light"
Saturday 10th	2-4pm	St Mary's, Wootton	Christmas Bazaar
Sunday 11th	10.15am	St Mary's, Glympton	Parish Communion
Sunday 18th	10.15am	St Mary's Wootton	Parish Communion
	6.15pm	St Nicholas, Kiddington	Service of Nine lessons and Carols
Wednesday 21st	6.00pm	St Mary's Wootton	Carols round the Tree
Christmas Eve	4.00pm	St Mary's Wootton	Crib Service
	11.30pm	St Mary's Wootton	Midnight Mass
Christmas Day	10.15am	St Mary's, Glympton	Celebration of Family Communion

January Services

Sunday 1st	No Service.		
Sunday 8th	10.15am	St Mary's, Glympton	Parish Communion
Sunday 15th	10.15am	St Mary's, Wootton	Parish Communion
Sunday 22nd	10.15am	St Nicholas, Kiddington	Parish Communion
Sunday 29th	6.15pm	St Mary's, Wootton	Evensong with Holy Communion

P ARISH POSTING

The process of finding a new Rector progresses slowly. The advertisement for the post has now been published in The Door and on the Diocesan website. Interviewing

the candidates will take place in early February. In the meanwhile, we continue to be very well supported by visiting clergy and the life of the Church goes on. We hope that you will join us in celebrating the Good News at Christmas.

Peter Browne



WOOTTON CHRISTMAS BAZAAR



St Mary's Church,
Wootton-by-Woodstock,
Sat. 10th December 2-4pm



- Big Raffle – 1st Prize £100**
- Christmas Table Decorations and Wreaths**
- Mulled Wine & Mince Pies**
- Christmas Crafts and Gifts**
- Raffles**
- Christmas Bulbs**
- Bottle Tombola**
- Cakes**
- Hot chestnuts**
- Children's stalls and games**





GLYMPTON BONFIRE AND FIREWORKS

The annual free bonfire and fireworks display was held at Glympton Village Field on a damp Saturday 5th November. Despite the rain, the bonfire, which had

been skilfully built by the farm team during the previous week, roared into life at around 6.00 pm. By this time, attendees from Glympton and many surrounding villages were already feasting on succulent pulled beef rolls (from Glympton's own herd), burgers and hot dogs.



Thank you to everyone who has supported the Burditch Hall over the last couple of months. We'd especially like to thank everyone who has helped with events for the village - the delicious curry evening WCAST fundraiser, and Halloween chilli night for FOWS were both a great success - thanks so much to the teams who made them happen - and Neghat's

Indian Breakfast to raise money for the Conservation Trust was delicious and really well attended, thank you Neghat and team for a wonderful event!

The Bridge Bar is open on Friday and Saturday evenings and on Sunday lunchtimes 12-2pm and it's open to everyone to come along and enjoy a drink or a catch-up with your neighbours and friends.

A warm welcome awaits you so do come and see the newly refurbished hall and bar for yourself! If you'd like to join our email list to be the first to hear about events, or get in touch with ideas for events or to volunteer too!

.....please email: wottonCAST@gmail.com.



Inevitably these were washed down with lashings of mulled wine, prepared to an intoxicating secret recipe, which kept out the chill. We again welcomed a number of Ukrainian families to share the occasion with the local co-ordinator writing "Such a successful evening for the Ukrainian guests last night. Food was amazing, they have never seen a fire like this before and the Fireworks were spectacular. Thank you and the Glympton team so much for the hard work put in and

for your preparedness to not only invite us but entertain us as well". Thanks to Pains Fireworks for supplying such a wonderful display which enchanted young and old alike. A hugely successful event, despite the soggy weather and straightened times, raised welcome funds for various local charities. Thanks to all who attended and to those hard working volunteers without whom such events just wouldn't happen.

David Hards

Our Christmas opening hours will be:
Saturday 24th December 5-9pm
Sunday 25th December 12-2pm - come along for a Christmas Day cheers!
Friday 30th December 5-10pm
Saturday 31st December - open until late
Sunday 1st January 12-2pm

Upcoming events:

Football World Cup matches :

We'll be showing all the England games, and quarter finals, semi-finals and final.

16th December 7:30pm Christmas Singalong .

Come for mince pies, mulled wine and a sing along to all the Christmas hits led by Wootton musicians! (a musical ear is not required to participate)

23rd December 7:30 - 9pm Christmas Cocktail Bar. For one night only,

a guest cocktail bar serving Christmas drinks to get us in the festive spirit!

25th December 12-2pm Christmas Day Drinks

Let's get together for a Christmas cheers - all welcome!

31st December until late - NYE

Details to follow - come along and celebrate!



Wishing everyone a Merry Christmas!
Wootton Sports and Community Trust (WCAST)

A GEORGIAN CHRISTMAS DINNER

Simon Heighes reflects on Georgian appetites.

One of my ancestors was the English diarist 'Parson' Woodforde (1740-1803), who kept a journal religiously for 44 years between 1758 and 1802. It's now in the Bodleian Library in Oxford where, over the years, I've enjoyed leafing through its yellowing pages and making a few notes.

During the 1760s, Woodforde spent his student days at New College, and from time to time journeyed out to explore the surrounding countryside. I discovered a few years ago that he actually visited Wootton on several occasions, where he preached at the church and was entertained afterwards by the vicar, Mr Banks, at Wootton Place. On 17 May 1767 he rode here 'upon a Hack horse', got very wet and had 'the Wind directly in my Face' all the way from Oxford. But he was rewarded with a dinner of 'seven or eight dishes' and a tour round the 'charming pretty House and Gardens'. When he visited again in August 1774, lunch at Wootton Place included 'a great haunch of venison' and the company of 'the President of Trinity College and Mr



Banks's aunt who is above 80 and very hearty'.

Despite living through exciting times, Woodforde was mostly

interested in the routines of daily life. He gives no more space in his diary to the Fall of the Bastille than he does to a description of how he bought an extra-large crab from a travelling fisherman. And food was one of his favourite things. His glorious gastronomic descriptions are his greatest legacy.

Woodforde tells us

about his Christmas dinner in 1772 – 250 years ago – with lip-smacking delight:

We dined at 3 o'clock and were an hour and a half about it. For dinner we ate two fine Codds boiled with fried Souls round them and oyster sauce, a fine sirloin of Beef roasted, some peas soup and an orange Pudding – for the First Course.

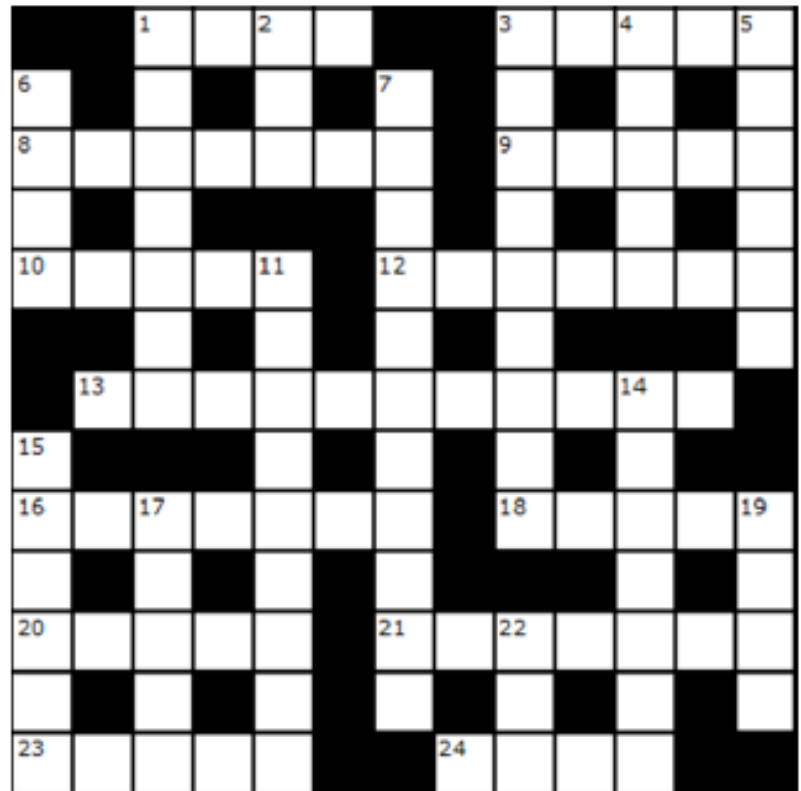
For the Second Course, we had a lease of Wild Ducks roasted, a fore quarter of Lamb and salad, and mince Pies. We drank toasts from a Grace Cup and wished each other Merry Xmas. After the Second Course, there was a fine Plumb Cake ... as is traditional. Later we had rabbits roasted for supper as is usual on this day.

Simon Heighes

THE "OUTREACH" CROISSANT CROSSWORD — No. 210

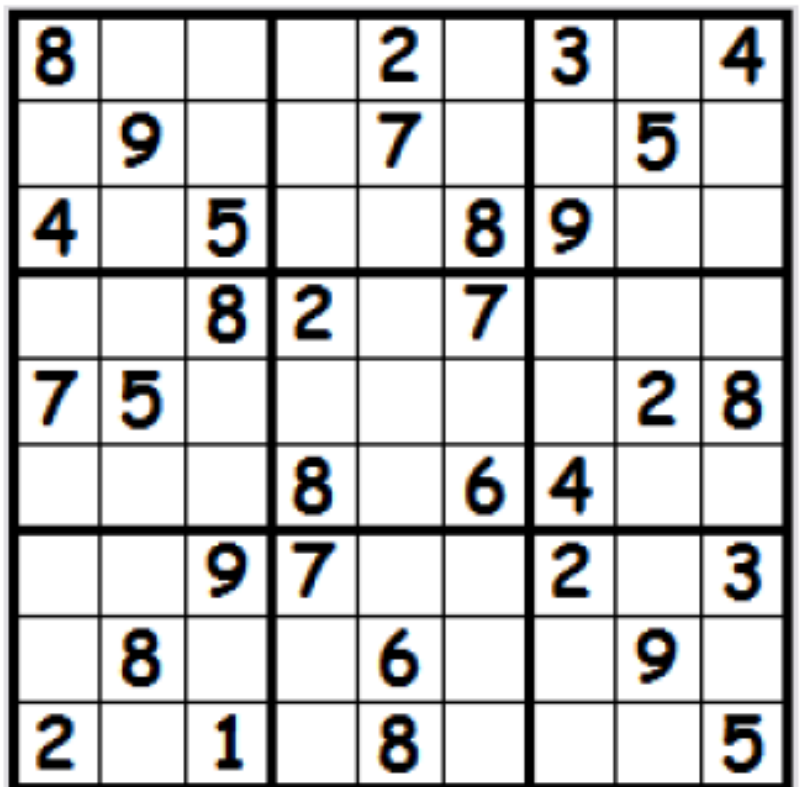
Across

- 1) Fellow (4)
- 3) Biblical patriarch (5)
- 8) Marine mammal (7)
- 9) Additional (5)
- 10) Stains (5)
- 12) Asserts (7)
- 13) Beatrix Potter character (5,6)
- 16) Condition (7)
- 18) Flamboyance, panache (5)
- 20) Excessive (5)
- 21) Brought on birth (7)
- 23) Obtains in return for work (5)
- 24) Outer part of citrus fruit (4)



Down

- 1) Unit of energy (7)
- 2) Tree of genus Fraxinus (3)
- 3) Beyond description (9)
- 4) Following (5)
- 5) Rough in texture (6)
- 6) Dutch cheese (4)
- 7) Not showing love for one's country (11)
- 11) Samples for scientific study (9)
- 14) Illegal (7)
- 15) Wife or husband (6)
- 17) Command (5)
- 19) Neat (4)
- 22) Female deer (3)



Last month's winner, October, was HILARY STENNING.
CONGRATULATIONS!! Your croissants await you at Wootton Stores.
 Completed puzzles should be handed in at Wootton or Glympton Stores, with your name and phone number, before the 15th of the month. The first correct answer drawn after the 15th of the next month will win four croissants.
 Outreach is grateful to WOOTTON STORES for their continued generous support.

W

OOTTON RELIEF
IN NEED CHARITY.

Wootton Relief in Need came about by the amalgamation of three village Charities in 1973.

The object of the charity is to provide financial assistance to any individual person or family, resident within the parish of Wootton, who are in need, through hardship or distress. If you feel that you have a need and could benefit, would you please, in the first instance, discuss it with either Mrs Jane Hoare 59, Castle Road, tel no 813026 or Mrs. Joan Thomas, 15 Milford Place, tel no.812354.

Whatever income is not disposed of to individuals or families, resident within the parish of Wootton, then the Trustees can distribute the balance of monies to clubs & organisations within Wootton parish, where it will be of general benefit to the inhabitants.

If your club or organisation deserves consideration to receive monies, would you please write to the Clerk to the Trustees, Mrs. Joan Thomas, 15 Milford Place, Wootton, Oxon. OX20 IEN enclosing your last approved annual balance sheet before January 31st 2023.

*Mrs. J Thomas
Clerk to the Trustees*

W.R.I.N.

HELP IN TIME OF NEED!

Many people and families may need financial help. Particularly as it could be some time before Government grants are received.

If you have a specific need **Wootton Relief in Need Charity** may be able to give you a Grant.

Please do not feel hesitant, or reluctant to apply for help. Your application will be treated in strict confidence.

If you would like further information, or wish to make an application, please contact:

Joan Thomas: phone 812354

Alternatively if you know of anyone who has a specific need, please pass on this message.

T

HE KILLI
QUIZ



For November's quiz, Frank Henderson put us through our paces, with the fall in food prices, an ostrich pelvis and a fearsome bull castrater. Congratulations to the CIA, who won at a canter. Second were Team Alb, just ahead of The Oats and Pickled Brians. Next month, Gary will be leading a festive quiz on Sunday Dec 11th. Do come and join in, on second Sundays of the month, 8pm at the Killi.

Phil Parker

NOAHSARK
Printing
Company

SIMPLY BEAUTIFUL DECORATION

All forms of interior and exterior painting and decorating, specialising in murals.



T: 01295 811026

E: pete@noahsarkpainting.co.uk

W: noahsarkpainting.co.uk

Pebsham Cottage, Aynho Road, Adderbury
Oxfordshire, OX17 3NL

DIRTY CARPETS, UPHOLSTERY, RUGS



**Most carpets
dry within the
hour**

**Unbeatable
results,
removes
almost all
spots & stains**

Call

GRIMEBUSTERS

01993 868924 01865 726983

www.grimebusters.co.uk

N EWS FROM WOOTTON PARISH COUNCIL

There was a large turnout for the Parish Council meeting on 14 November, drawn by the item on the Blenheim solar farm development. After various contributions from the floor and questions from councillors, the Council agreed the following statement:

The announcement on 3 November of the proposals for the major "Botley West" solar farm development came as a complete surprise to the Parish Council, which had no prior knowledge of such a development being contemplated. We feel there is much more information which needs to be provided about the project, especially its layout, physical intrusion and effects on the environment.

The Parish Council is very aware that while the proposed development has been welcomed by some, it has caused a widespread and strong adverse reaction

If built, this development would be by far the largest solar farm to be constructed in the UK.

The proposed development raises major issues about the loss of productive agricultural land, the most effective ways of decarbonising our energy supplies, the effects on wildlife and the

Physiotherapy clinic & Pilates studio

A helping hand
to get you back to health



Tucked away between the Old Mill Coffee House and the Methodist Church on West Street, we offer a full treatment programme to get you back to health.

Manipulation	Low back pain
Acupuncture	Sports-related injuries
Massage	Neck pain
Ultrasound	Muscle injury
Manual Therapy	Joint pain
Pilates exercise	Post-op re-hab

Visit our website for more info about our Physiotherapy treatments and for our timetable of Pilates exercise classes.



Chipping Norton Physio
Lectern Hall, West Street
Chipping Norton OX75LH
T 01608 645 608
E physio@chippingnortonphysio.com
www.chippingnortonphysio.com/



Ambiance beauty

www.ambiancebeauty-woodstock.com
07934123931

Microdermabrasion
Clinicare Targeted Facials
NYR Facial & Massage Therapies
Advanced Waxing
Eleebana Lashlifts
The Manicure Company Gel Polish
and more.....

environment, loss of amenity for our parish, as well as concerns about the by-passing of local planning authorities, and the speed with which the project is apparently being pushed forward.

The Parish Council is therefore seeking to work with the West Oxfordshire District Council, and the other parish councils affected, to secure more and better information about the development itself and the planning processes through which it will need to be considered. This will enable the Council to participate as far as it is permitted in the planning process and be better able to represent the views of the residents of Wootton. We will be reporting back, and placing more information on our website when we are able to do so, and in time for us to submit a response to the consultations being undertaken. In the meantime, we urge everyone in Wootton Parish;

- To let us know your initial views on the proposals, and any particular aspects you think we should be concentrating on.
- To complete the questionnaire set up by our local MP, Robert Courts on his website <https://www.robertcourts.co.uk/botleysolarfarmstatement>
- To visit the 'information event' in Woodstock Community Centre on Saturday 19 November (11.00am-4.00pm)

· To respond to the 'community consultation' by the developers either by emailing them on info@botleywest.co.uk or visiting www.botleywest.co.uk, or filling in one of their feedback forms

This statement, together with other material about the proposed development and the issues it raises are available on our website, www.woottonparishcouncil.com If you would like to email the Council with your views then please do so either to clerkwpc0@gmail.com or the Chair, johnharwood.wpc@gmail.com

Apart from this item we agreed the budget for next year, which as we have explained in previous editions of Outreach, does mean an increase in the parish council tax rate. But as a result we hope to be able to maintain current services, continue to support parish organisations with grants, and begin to restore the parish finances.

Finally, following the recent elections, we were pleased to welcome two new councillors our number: Marcus Brown from Castle Road and Fiona Mackinlay from Chapel Hill. Please note that our next meeting will be in January 2023.

John Harwood
Chair

LIFE'S EVENTS

Joan Thomas would like to sincerely thank friends and family for her one hundred and thirty-one sympathy cards received in memory of her son Mark. He was a true Wootton lad who grew up in a different village from today. Mark is very much missed.

We would like to wish everyone a "Very Merry Christmas and Happy New Year!"

If you would like a special event, birthday etc. to be included in Life Events please contact me by the 15th of the month for next month's publication.

Fiona Mackinlay,
07880 327674
fiona@mackinlay.net

Parish of Wootton, Glympton,
and Kiddington

H ELP WITH FINANCIAL PROBLEMS

Thanks to the generosity of some parishioners, we are able to offer grants to anyone who is experiencing financial difficulty during the Pandemic.

Please contact the Chairman of the PCC, Peter Browne, on 01608 658017 or by email: brownepd49@gmail.com giving family details and a summary of your financial commitments.

HELP IN TIME OF NEED



Bicester Wills & Probate

- Standard Single Will - £225
- Standard Mirror Wills - £325
 - Bloodline Wills - £625
- Lasting Power of Attorney
Property & Financial Affairs - £325
- Lasting Power of Attorney
Health & Welfare - £325
- Both Lasting Powers of Attorney - £500
 - Probate Assistance from - £1,500
 - Pre-paid Funerals Plans - from £1,700

Gail and the Team
offer a friendly
estate planning
service



Come in and see us
3-5 Causeway, Bicester
Oxon OX26 6AN
or phone
01869 226760

gail@bicesterwills.co.uk
www.bicesterwills.co.uk

Leigh Edwards Solicitors

DIVORCE AND FAMILY LAW SPECIALISTS

Specialists in divorce, separation, children
matters, pre and post nuptial agreements

friendly sensible service
easy parking

for a free initial consultation call

tel: **01865 884436**

Authorised and
Regulated by the
Solicitors Regulation
Authority

www.leighedwards.com
The Tack Room, Worton Park,
Worton, Oxfordshire OX29 4SX

Leigh Edwards Solicitors is a trading name of Lee Chadwick Solicitors LLP

PELLMANS

Your Local Solicitors

- **Business and Employment Law**
Contracts, Legal Compliance and Disputes
- **Property**
Buying and selling homes, Investment
Property, Commercial and Agricultural
- **Divorce**
Finances, Children and Cohabitation Disputes
- **Wills, Probate and Trusts**
Tax Planning and Lasting Powers of Attorney

01865 884400

www.pellmans.co.uk

1 Abbey Street, Eynsham, Oxford OX29 4TB

Home visits and evening appointments

available

Jerrams Brothers Funeral Directors

***33 High Street,
Woodstock, OX20 1TE
(01993 811491)***

- *Private Chapel of Rest*
- *24 hour personal family service*
- *Pre-Paid funeral plans*

As the third generation of a funeral directing family, Nicholas and Benjamin Tonks believe that, at a time of bereavement, compassion and the family's wishes are paramount. In partnership with the Church and the community we endeavour to give the bereaved as much care and support as possible.



WOODSTOCK CHIROPRACTIC CLINIC

Providing quality chiropractic care since 1983

We use a range of manual techniques, such as joint manipulation, mobilisation, dry needling acupuncture and rehabilitation exercises to help relieve many common spinal problems. Alongside chiropractic treatment, we also offer physiotherapy and massage.

For further information or to make an appointment please call **01993 811815**, or visit our website **www.woodstockchiropractic.co.uk** and 'Like us on Facebook' for news, offers and appointment availability.



BELL-VOIR
OR BEAVER?

In Wootton Stores you'll find lots of goodies for Christmas. There are some lovely tins of biscuits, mince pies, stollen, lebkuchen, chocolates, fudge and cake. The problem is choosing what to buy! You will also find plenty of wine and beer to go with it, or if you're laying off the booze try a warming glass of hot ginger cordial – perfect with a stick of cinnamon (and a tot of whisky if you crack). We also have some new drinks from Belvoir (choose your own pronunciation; I say 'beaver') – a Festive Fruit Punch and a Mulled Winter Cordial – both delicious.

And let's not forget Hogmanay / Auld Year's Night / New Year's Eve. Should you receive a first-footer, don't worry if it's not a dark-haired man bringing you a lump of coal (considered to be the luckiest first guest and gift to arrive after midnight). Whoever it is, whatever they bring, fling your arms around them and then offer them any of the goodies mentioned above that are no doubt lingering in your cupboard after a plentiful Christmas!

Melanie Waldron

WOOTTON
CHRISTMAS BAZAAR
at ST MARY'S CHURCH,
on SATURDAY 10TH DECEMBER,
2 - 4pm.

Warm thanks to those kind people who have donated such lovely soft toys for the Bazaar! We now have enough for a cracking Tombola! Still needed - CLASSY JEWELLERY, ATTRACTIVE PRESENTS (new or for re-gifting), CAKES AND BOTTLES. These may be brought to the church on Friday 9th December, or the morning of the Bazaar, or can be collected. Many thanks!!

This year's CAROLS ROUND THE TREE will be at Wootton church, on Wednesday 21st December at 6.30 pm. Anyone who can play an instrument is very welcome to join the Wootton Village Band, to lead the singing. We'll have two practices in the church, on Tuesday 13th and Friday 16th December at 7.30 pm. Please contact me if you'd like to play, so that I can prepare your music.

Ann Leggett

Tel: 01993 813005

email: anncleggett@gmail.com

WOOTTON VILLAGE HALL TALKS

Chris Floyd, one of the country's leading portrait photographers, gave an insightful and highly amusing talk in October - detailing sessions with some of the world's most famous faces, including Paul McCartney, David Bowie, David Attenborough, David Hockney, Cate Blanchett, Oliver Reed and Elvis Costello, with them all featuring in his marvellous new book, Not Just Pictures.

Chris also took portraits at Kensington Palace of Kate and

William, when they were the Duke and Duchess of Cambridge, to celebrate their tenth wedding anniversary - with the images featured in countless newspapers and magazines around the world. After opting for Wootton to deliver the first talk about his book, Chris flew to New York to promote it in Greenwich Village

The evening raised over £600 for the Ukraine Humanitarian Appeal and we were delighted to welcome two young Ukrainians to the village hall, with one boy - Vova - presenting Chris with a couple of bottles of wine before saying a few words of appreciation in English. Our next speaker - another star

LYNDY CARY

CORDON BLEU

OXFORD • CHELTENHAM • BATH
THE COTSWOLDS & BEYOND

CORDON BLEU CATERING TO YOUR DOOR

07891 606873 • CONTACT@LYNDYCARY.COM • LYNDYCARY.COM

name - is due to appear at 7.30pm on Friday January 20th. If you would like to book seats and support the Ukraine appeal, then please contact us through our website www.woottontalks.co.uk (Children over 16 welcome) Entry is £8 in cash and includes free food, with wine and soft drinks available for a modest donation Recent risk assessment has shown that the village hall meets all the current government safety standards for indoor community spaces - but we would encourage those attending to wear a face-covering. The Talks Team wishes everybody a Happy Christmas and a healthy New Year - and look forward to seeing you in the village hall in 2023

Andy Morgan
(01993 813016)

Christmas gifts, decorations,
pottery vouchers and much much
more



Navah open studio and Christmas
shopping event Saturday 10th
December 12:00-6:00 mulled wine
and seasonal treats
31 Castle Road Wootton

hello@navahpottery.co.uk
07827296279

NEW WEBSITE NEW WEBSITE

**HEAD TO OUR BRAND NEW WEBSITE FOR ALL THE LATEST
VILLAGE NEWS, EVENTS & ANNOUNCEMENTS**

WOOTTONBYWOODSTOCK.CO.UK

The site is by the village, for the village so please use the forum, interact and contact us if you'd like to contribute
woottonbywoodstock@hotmail.com



WOOTTON VILLAGE HALL CHRISTMAS PARTY

WITH A SPECIAL SCREENING OF THE LEGENDARY PANTO

LITTLE RED WOOTTINGTON & THE TWO BEARS

17

**DECEMBER
FROM 5PM**

**6.30PM PANTO SCREENING
8PM-11PM FAMILY DISCO**

**FREE ENTRY
DONATIONS BAR
REFERESHMENTS PROVIDED**

DRESS CODE: SPARKLES & CHRISTMAS JUMPERS



- Wootton School FOWS -

Christmas

WREATH WORKSHOP

FUNDRAISER

Thursday 8th December - 7.30pm
at Wootton School Hall

£25 per wreath
All materials provided

Email
friendsofwootton@gmail.com
to book your place

Please bring cash for mulled
wine, fizz and mince pies!



All proceeds to FOWS

"NIGWIG'S NASHTA"

Neghat and Malcolm, who hosted the "Indian Breakfast" served at the Bridge Bar on Saturday 12th of November, would like to thank the 48 people who participated in this event.

A breakfast of Spiced Leek Scrambled Egg on toast, Aloo Paratha (potato flatbread), Curried Chickpeas, and a cardamom and rosewater flavoured Halva (desert) was served in three sittings. The event was staged for Wootton Conservation Trust, for whom £270 was raised after expenses.

The event went down very well, as did the meal it seems, thanks to assistance from a small band of willing helpers from the village and some friends from London.

It is hoped to hold another such meal, probably a Sunday brunch featuring a "colonial concoction", in the New Year – Watch this space.

Malcolm & Neghat

This month's Solution.....*But don't look yet!*

SuDoku page 8

8	1	7	9	2	5	3	6	4
6	9	3	1	7	4	8	5	2
4	2	5	6	3	8	9	1	7
9	4	8	2	1	7	5	3	6
7	5	6	4	9	3	1	2	8
1	3	2	8	5	6	4	7	9
5	6	9	7	4	1	2	8	3
3	8	4	5	6	2	7	9	1
2	7	1	3	8	9	6	4	5

crossword 209 solution.

M	A	K	E	S	C	A	R	B	I	N		
E	Y	R	O	A	I	O						
M	O	S	E	N	E	G	A	T	E	S		
O	T	M	F	E	C	Y						
R	H	O	D	O	D	E	N	D	R	O	N	
Y		V	C	I								
	A	D	V	E	R	T	I	S	I	N	G	
	O			I	O					S		
	E	N	T	O	M	O	L	O	G	I	S	T
A	E	Z	N	T	Z	O						
B	A	G	G	A	G	E	H	U	M	I	D	
L	A	R	R	E	I	G						
E	E	L	K	E	Y	S	B	R	I	E		

Remember to submit your Outreach articles or copy by **15th December** to outreachwgk@gmail.com or leave at:
Wayside, 3 Glympton Rd.

LOCAL CONTACT PEOPLE

Rector	Position vacant	
Licensed Reader	Mrs Jenny Wagstaffe	01993 811027
Churchwarden: Wootton	Position vacant	
Churchwarden: Glympton	Lt. Col. Peter Browne	01608 658017
	Mrs Connie Surtees	01993 812076
Churchwardens: Kiddington	Mrs Jo Deacon Mr Howard Dellar	07917 158274 07540 704056.
Verger: Wootton	Mrs Jane Scott	01993 813236
PCC Secretary	Position vacant	
Baby & Toddler Group - Chair:	Ms Clare Potter	07921 120068
Bell Ringers - Tower Captain:	Mr Mel Leggett	01993 813005
Glympton Village Hall - bookings:	Mrs Serena Warmington	01993 811486
Glympton P.O. & Stores	Mrs Serena Warmington	01993 811486
Parish Council - Chairman:	Mr John Harwood	johnharwood.wpc@gmail.com
- Clerk:	Ms Chris Hoad	clerkwpc0@gmail.com
Police - Community Support Officers	Sgt's. Payne and O'Hare, PC Rob Webb and PCSO Helen Keen & Chris Jones	24 hour "non-urgent" incident line 101
Village Hall (Administrator):	Mrs Janet Mead	01993 359225 (dial area code too)
Wootton Community Chair And Sports Trust (WCAST) Sec.	Rachel Jones Natalie Mitchell-Boorne	woottoncast@gmail.com
Wootton Conservation Trust: Chair	Mr Phil Parker	
Local contacts:	Mr Ed Taylor	07771 893046 edward@roberttaylorandson.com
Wootton Flower Show – Sec.	Natalie Mitchell-Boorne	07971 638136
Wootton School - Head Teacher	Mrs Lauren Murrey	01993 811520
Wootton Stores	Mrs Rachel Jones	01993 811474
Wootton Relief in Need	Mrs Joan Thomas	01993 812354
	Mrs Jane Hoare	01993 813026
"Outreach" Editor	Mel Leggett	01993 813005
e-mail address		outreachwgk@gmail.com
Advertising Manager	Mrs Primrose Williamson	01993 812670
Treasurer	Mr Neil Scott	01993 813236

Should you, or someone else, be on this list?? Please let the editor know of any omissions or corrections.



C HRISTMAS WREATH MAKING COURSE

with Tom Goffe

Glympton Village Hall

6.30pm

Tuesday 6th December

Seasonal refreshments

Please book your place

conniesutees36@smsn.com

07585 138582

Glympton Village Shop

- Groceries
- Italian Leather Handbags
- Silver and fashion Jewellery
- Pretty Scarves
- Candles and Diffusers
- Freshly Ground Coffee

Post Office Services & Products available

- Banking
- Free Cash Withdrawals
- Cash Deposits (for most Banks)
- Cheque Deposits
- Postal Services
- ParcelForce



Shop Opening hours

Mon, Tues, Thurs, Fri 9am – 5pm

Wed 9am -1pm

Post Office Opening hours

Mon–Fri 9am-12noon



TELEPHONE 01869 340202 FAX 01869 340074

DOMESTIC HEATING OILS—FARM FUELS
BOILER MAINTENANCE—TANK REPLACEMENT

DANSAM HOUSE, 29 WORTON ROAD, MIDDLE BARTON
CHIPPING NORTON, OXON OX7 7EE

EMAIL: sales@ackermanandniece.co.uk



Our opening hours,
currently, are:

Monday-Friday

8.00 - 1.30 & 3.00 - 7.00

Saturday 8.00 - 12.00

Sunday 9.00 - 11.00



☎ 01993 811474

or- email: manager@woottonstores.org.uk