

Outreach



MARCH 2023

THE KILLINGWORTH CASTLE

The bar is open for drinks Wednesday - Sunday Mid-day - "close" (22.30 approx.)
 Closed Monday/Tuesday

We can now offer food on:	Wednesday - Friday:	12.00 - 2.00 & 18.00 - 21.00
	Saturday:	12.00 - 15.00 & 18.00 - 21.00
	Sunday :	12.00 - 15.00 & 18.00 - 20.00

cherwell graphics

design

print

copy

Flyers, leaflets, brochures, business cards, canvas prints, newsletters, greetings cards, postcards, labels, invitations, letterheads, compliment slips, orders of service, wedding printing, signs, banners, posters, raffle tickets, gold/silver foiling, photographs and more.

**Banbury Road, Kidlington, Oxford, OX5 1AQ
 T: 01865 374443 E: info@cherwellgraphics.co.uk**

DIRTY CARPETS, UPHOLSTERY, RUGS



**Most carpets
dry within the
hour**

**Unbeatable
results,
removes
almost all
spots & stains**

Call

GRIMEBUSTERS

01993 868924 01865 726983

www.grimebusters.co.uk

Parish of Wootton, Glympton,
and Kiddington

HELP WITH FINANCIAL PROBLEMS

Thanks to the generosity of some parishioners, we are able to offer grants to anyone who is experiencing financial difficulty during the Pandemic.

Please contact the Chairman of the PCC, Peter Browne, on 01608 658017 or by email: brownepd49@gmail.com giving family details and a summary of your financial commitments.

HELP IN TIME OF NEED



This month's cover ..

Neghat and Malcolm's Kedgeree Brunch at the Bridge Bar, in aid of Wootton Conservation Trust, was a great success. See elsewhere in this issue.

Please keep the photos coming in - ***everyone***; Remember...

Outreach depends on ***YOUR*** contributions.

If you have events, clubs, sports, activities - anything at all, please get in touch and we'll see what we can do.

Deadline for the April edition - 15th March :

email to outreachwgk@gmail.com

Mel

SERVICES
FOR MARCH



February Services and Events

Sunday 5th	10.15am	St Mary's, Wootton	"Sunday Light"
Sunday 12th	10.15am	St Mary's, Glympton	Parish Communion
<i>Bishop Gavin will lead this service</i>			
Sunday 19th	10.15am	St Mary's Wootton	Mothering Sunday
Sunday 26th	10.15am	St Nicholas, Kiddington	Parish Communion

LIFE'S
EVENTS

There are two more members of our community who have died, and who are lovingly remembered by family and friends. Before his retirement, Tony Benfield ran a local Building Company, with his brother, John. They were known as hard-working, conscientious builders, and, after his brother's sudden death, Tony continued their work in our area. We remember him with love and affection and offer our sympathy and understanding to Gill and the family in their bereavement.

John Roberts moved into the village a few years ago, with Anne, his wife, and shared in the life of our community. They were often seen out with their dog, and cared very much for their neighbours who live alone. Love and sympathy to Anne and his family.

If you would like an event, celebration, birthday etc to be

included in Life's Events please contact fiona@mackinlay.net or 07880 327674. The deadline is the 15th of the month for the next month's publication.

Fiona MacKinlay

FOWS
UPDATE



We are continuing our work to support Wootton pupils through raising money to subsidise school outings and residential trips. This month we will be collecting good quality second-hand clothes for Bag2School at the Village Hall on Sunday 12th March, 2-4pm. All donations are welcome. We are also pleased to announce a Quiz Night at the Village Hall on Friday 24th March (see poster in this issue). Tickets on sale at Wootton Stores. Thank you for your continued support.

Rebecca Wilson
The Friends of Wootton School



QUIZ NIGHT

FRIDAY 24TH MARCH
Wootton Village Hall
Doors open 7pm

Quizmaster Martin with
questions and challenges to
test your head, your mind
and your brain.

All proceeds to FOWS

Teams of 8

Tickets £5
from
Wootton
stores.



Cash only on the night.

ARE YOU INTERESTED IN HAVING A JAM?

Do you fancy having a play and a pint in the Bridge Bar one evening?

HOW IT WORKS

- 3 get songs in advance
- 2 turn up and tune up
- 1 sit around and play

TAKE IT TO THE BRIDGE BAR

If it is something you may be interested in please contact us at..

CFGandAM@gmail.com

or let Martin Eastaugh or Dom Knight know

All levels welcome

SUBBUTEO NIGHT



WEDNESDAY 22nd MARCH - 19:30
the bridge bar

All welcome - to play or watch

No experience required

Let us know if you'd like to play
martininwootton@gmail.com

Join us for a

BOARD GAMES NIGHT!



FRIDAY 31ST MARCH

THE BRIDGE BAR

6:30 - 10PM

BOARD GAMES - CARDS
EXPECT NOISY FUN!



Contact Gary roouusse@hotmail.com for info or just turn up - free entry!



WCAST

Wootton Community
and Sports Trust

The Winter Warmer continues to run on a Thursday morning 10am - 12pm - all welcome for free tea, coffee and biscuits and a chance to catch up with friends old and new. If you can help out with making teas and coffees one Thursday morning please let us know!

Did you know our Crowdfunder is still open? With energy prices and a cold winter so far, our electricity bill alone is a significant cost for the WCAST charity. We need to repair the roof and make other repairs to the building so any help you can offer would be greatly appreciated. You can find our Crowdfunder page at <https://www.crowdfunder.co.uk/p/burditch-hall-wootton> if you would like to help.

WOOTTON FOOTBALL UPDATE:

The men's team are currently 3rd in the Witney Division 3. With 10 games left there is a good chance for us to gain promotion.

We have a few home games in March and it would be great to see some supporters !

After having games called off before Christmas, due to frozen pitches, the U15 Youth team resumed their fixtures in the new year with a close 1-0 victory over Hanney. Although a Cup defeat 5-2 against a Wallingford side two leagues higher

followed, the boys bounced back with a 2-0 win over Kidlington and a more comfortable 5-1 win over Garden City to stay unbeaten in the league and remain top of their Division by a clear 5 points.

The business end of the season will begin very shortly with 6 extremely tough fixtures against the teams in the top half of the division to finalise positions for the season. We will report on these fixtures in future editions of Outreach.

A huge thankyou to the Parents, Volunteers and supporters for making this such an enjoyable season so far with special thanks as always to WCAST for making the club such a welcoming place to go for a drink and chat after the matches.

Meghan Del Monte



WOOTTON BABY AND
TODDLER GROUP

Wootton Baby and Toddler Group is looking for someone to take on the running of the group.

Friday mornings 9am-11am in school term time.

If anyone would like to know more, please message Clare on 07921120068 or email woottonbabyandtoddlergroup@gmail.com

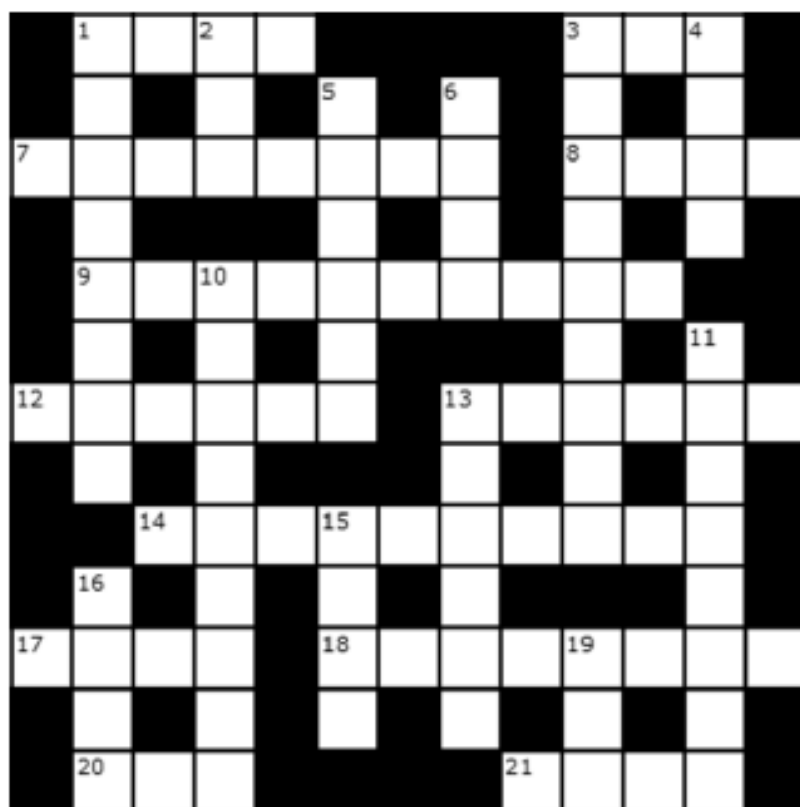
Thank you,

Clare.

THE "OUTREACH" CROISSANT CROSSWORD — No. 213

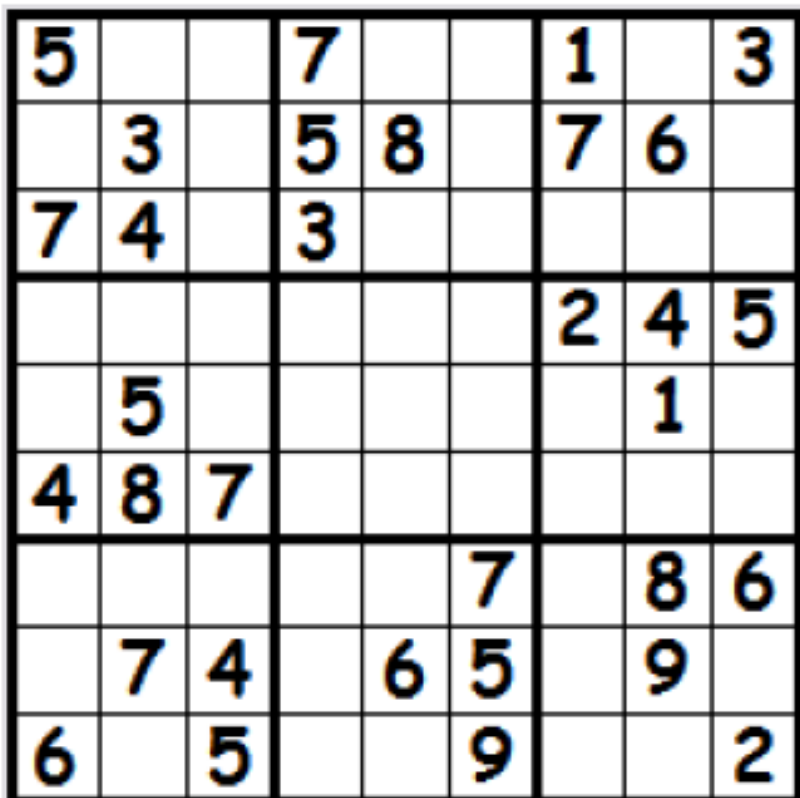
Across

- 1) Mountains, boundary
between Europe and Asia (4)
- 3) Rock outcrop (3)
- 7) Australian city (8)
- 8) South Asian language (4)
- 9) Absurd (10)
- 12) Dian, American
primatologist (6)
- 13) E.g. La Bohème, Aida (6)
- 14) London district (10)
- 17) Mountain lion (4)
- 18) Put into storage (8)
- 20) Colour (3)
- 21) Silly person (4)



Down

- 1) One expected to lose (8)
- 2) The whole of (3)
- 3) Belligerent(9)
- 4) Repeat (4)
- 5) Shipping Forecast area (6)
- 6) Rind of fruit (4)
- 10) In urgent need (9)
- 11) Glove you might throw
down (8)
- 13) Highly decorated (6)
- 15) Identical (4)
- 16) Impel (4)
- 19) Toxophilite's weapon (3)



Last month's winner, February, was GARY WARMINGTON.

CONGRATULATIONS!! Your croissants await you at Wootton Stores. Commiserations to those not lucky this time.... don't give up!

Completed puzzles should be handed in at Wootton or Glympton Stores, with your name and phone number, before the 15th of the month. The first correct answer drawn after the 15th of the next month will win four croissants.

Outreach is grateful to WOOTTON STORES for their continued generous support.

WOOTTON OPEN GARDENS AND FLOWER FESTIVAL (WOGAFF)

**Saturday 3rd
and Sunday 4th June 2023**

This biennial event (not to be confused with the Wootton Flower Show!) is held to raise money for the three mediaeval churches in our Parish of Wootton, Glympton and Kiddington. The event involves kind people opening their gardens to visitors, and a Flower Festival in Wootton church. The theme this year is "Village Crafts, Past and Present" and the idea is that the arrangements reflect a particular craft, perhaps with accessories such as photos and artefacts. This time, there will also be a Craft Fayre for amateur craftspeople living in the parish to display, and perhaps sell their wares.

If you would like to open your garden, provide a flower arrangement, or take part in the Craft Fayre, do contact me for more information on anncleggett@gmail.com.

Many thanks.


Ann Leggett.

WOOTTON PARISH COUNCIL

The Parish Council met on 13 February with another busy agenda and a good attendance of both councillors and local people.

We were able to report progress on the speed limit reduction plan with the county council having published the new traffic order for consultation. The consultation period lasts until 10 March and anyone who wishes either to support - or oppose - the new lower 20 mph limit should write to Christian Mauz at the county council. His email is christian.mauz@oxfordshire.gov.uk. There is no need to write at any length; it is enough simply to say where you live, whether you support or oppose the scheme and, briefly, why (eg road safety). One specific road safety issue which was raised at the meeting was the danger to pedestrians having to walk on the road on the B4027 near the Killingworth Castle, and this is now being looked into.

Toad warning signs will soon be appearing in West End, as the local amphibians undertake their spring migration. The national toad population has been falling for many years and this year the Wootton Toad group is keen to help save as many local toads as possible. They have a poster in the shop window and are appealing both for volunteers to join the evening patrols, and for drivers to slow down.

Next was the now regular item on the Botley West solar power 

project. Cllr Andy Graham reported on the latest meeting between WODC and the developers, and Tim Sumner of the newly formed group Stop Botley West - Wootton talked about the strategy of the new group. Various specific issues were raised and questions answered. As Cllr Graham pointed out, the timetable of what happens next is very much in the hands of the developers.

Another item which attracted much interest was the WODC consultation on the draft Combe Village Design Statement'. This document which will form part of the formal planning policies influencing any development in Combe was both impressive in itself, and raised the question of whether Wootton should have a similar Village Design Statement. The council felt it was well worth investigating and Frances Bates has agreed to do so and report back. We would particularly welcome anyone in Wootton who has worked in planning or is a qualified planner to get in touch with us so that they can help us understand more about the value of a VDS.

Finally, we agreed to a new process for the council to follow when appointing trustees to the Wootton Relief in Need charity and an advertisement asking for people interested in putting their names forward will be appearing soon.

The next meeting of the parish council will be on Monday 13 March.

*John Harwood
Chairman*

WANTED!
TRUSTEES FOR WOOTTON
RELIEF IN NEED CHARITY.

Wootton Relief in Need is an important village charity which provides financial help to local people who are in distress or facing hardship. The Parish Council is responsible for appointing some of the trustees of the charity and is currently looking for local people to fill two vacancies.

Trustees make the decisions about how the charity works and enable it to carry out its mission. The role does not involve fundraising, and doesn't need any specialist skills, or previous experience as a trustee. But you do need to be over 18.

Empathy and understanding, together with local knowledge, and a concern for the welfare of others are the main attributes which we are looking for. Previous experience working with those in need and knowledge of the benefit system would be useful. Trustees are not paid.

More information about Wootton Relief in Need can be found in their page on www.WoottonbyWoodstock.co.uk, or by speaking to one of the existing trustees.



NOAH'S ARK Painting Company

SIMPLY BEAUTIFUL DECORATION

All forms of interior and exterior painting and decorating, specialising in murals.



T: 01295 811026

E: pete@noahsarkpainting.co.uk

W: noahsarkpainting.co.uk

Pebsham Cottage, Aynho Road, Adderbury
Oxfordshire, OX17 3NL

Physiotherapy clinic & Pilates studio

A helping hand
to get you back to health



Tucked away between the Old Mill Coffee House and the Methodist Church on West Street, we offer a full treatment programme to get you back to health.

Manipulation	Low back pain
Acupuncture	Sports-related injuries
Massage	Neck pain
Ultrasound	Muscle injury
Manual Therapy	Joint pain
Pilates exercise	Post-op re-hab

Visit our website for more info about our Physiotherapy treatments and for our timetable of Pilates exercise classes.



Chipping Norton Physio
Lectern Hall, West Street
Chipping Norton OX75LH
T 01608 645 608
E physio@chippingnortonphysio.com
www.chippingnortonphysio.com/

LYNDY CARY

CORDON BLEU

OXFORD • CHELTENHAM • BATH
THE COTSWOLDS & BEYOND

CORDON BLEU CATERING TO YOUR DOOR

07891 606873 • CONTACT@LYNDYCARY.COM • LYNDYCARY.COM

Do you think you could spare a little time to help others by being a WRiN trustee? Then please register your interest by writing to or emailing our Parish Clerk, Corina Cheeks, on Clerkwpc0@gmail.com with a short explanation of what you think you could bring to the charity. Please note that those who have been trustees in the past are eligible for appointment.

John Harwood

GRANTS from PARROTT & LEE EDUCATION FOUNDATION

The Parrott & Lee Educational Foundation (registered charity no. 309586) gives financial help primarily to Wootton School, but it also offers grants to young people completing secondary education. The purpose of the grants, which are usually of around £300 a year, is to assist young people to embark on a career. Grants may be used to help towards university or college course fees, apprenticeships, maintenance, travelling, outfits or specialist equipment.

Applicants need to be under 25, and former pupils of Wootton School and/or residents of the historic parish of Wootton (i.e. not Glympton or Kiddington).

Application forms are available from Wootton Stores. Applications will be considered at the next half yearly meeting of the Trustees in mid April.

John Harwood

NEW TRUSTEE WANTED

for the Parrott & Lee Educational Foundation

The Parrott and Lee Foundation is the historic village charity which gives funding to Wootton school and also provides grants to school leavers to help meet the costs of apprenticeships, university or college courses.

One of our trustees is leaving soon and we are looking for someone from the village (or nearby) to take over their place on our trust board. Our trustees oversee the agents who manage our properties and make decisions about awarding grants to the school and to individuals. Ideally, we are looking for someone who has experience in managing charity finance and accounts. The workload is very manageable, with only two normal trustee meetings a year but with responsibility for the accounts during the year.

If you think you might be interested and would like to know more then please give me a call

*John Harwood,
Chair of Parrott & Lee Educational
Foundation
(phone: 811509)*

A diary date: SATURDAY 15TH APRIL GRAND NATIONAL EVENT IN GLYMPTON VILLAGE HALL - MORE DETAILS LATER.
--

SOLAR: WOOTTON AWARENESS GROUP

Everyone will by now have some knowledge of the proposed Botley West Solar Farm (BWSF). It is in response to this proposal that a group of Wootton residents has been formed to ensure that the village is kept fully in the picture. The group, made up of those listed below, recognises that there is a climate emergency and shares everyone's desire that we as a country reach net zero as soon as possible. But we do not think that erecting an enormous solar "farm" across rural Oxfordshire, much of it in the green belt, is the right way to go about it.

The name, Botley West, suggests that the installation will be far away from here. In fact it will cover open grassland and farmland stretching from Wootton and Tackley in the north, through the Hanboroughs, Bladon, Yarnton, Cassington and Eynsham, to Farmoor and Cumnor in the south. The land is being made available by Blenheim and Merton College who will make a great deal of money from it. Some 15 villages will be directly impacted by the proposed massed rows of solar panels, power stations, security fences and CCTV cameras covering an area the size of Heathrow Airport. Whether you drive, walk, cycle or ride through this area, you

will be constantly aware of its visual impact as you come and go from your home.

The Solar: Wootton Awareness Group (SWAG) is in close contact with the wider group of villages which has formed to oppose the development. Both the wider group and the Wootton group have had to become as well informed as we possibly can be in the pros and cons of solar and other renewable energies almost overnight! In future issues of Outreach we will be providing updates on the progress of BWSF, on how and when you can have your say, and on alternatives to solar on fields. We will be happy to answer any questions you may have in the meantime.

The proposal has not yet been approved and, since the current government's stated aim is to listen to the views of residents when considering large infrastructure projects such as this, everyone's voice matters. It is important to know that because of the size of this project it is classified as a NSIP (Nationally Significant Infrastructure Project), which means it will be approved or rejected by Whitehall and not by local authorities. A consequence of this is that there is no possibility of it being approved in a reduced form in the way housing developments sometimes are; if it is approved it will be approved in its entirety.



Whether you are in favour of BWSF or oppose it, or have yet to decide, we urge you to engage with it fully, as it will be the single biggest thing to happen to our village and to the surrounding area for many generations. More information and maps can be found on the website set up by the group of 15 villages, stopbotleywest.com.

We are: Malcolm Barnicoat, Pauline Briggs, David Neckar, Tim Sumner, Miles Tuely and John Wynne.

A SWAG WhatsApp group has been formed to share news, articles and key information. If you would like to join this please contact Tiggy Sharland, 07887 702502.

Tiggy Sharland

THE CHILDREN'S SOCIETY

The Children's Society has a network of programmes including drop-in services for runaways, children's centres and support for young carers. Their aim is to help children living at a disadvantage to ensure that they have the childhood that they deserve. MARCH is BOX opening month so please would you leave your box in the Shop or drop it off at Hordley. Many thanks.

Mary Tuely
01993 812462
mmtuely@gmail.com

This month's Solution.....*But don't look yet!*

SuDoku page 7

5	6	8	7	9	4	1	2	3
9	3	2	5	8	1	7	6	4
7	4	1	3	2	6	9	5	8
1	9	3	6	7	8	2	4	5
2	5	6	9	4	3	8	1	7
4	8	7	1	5	2	6	3	9
3	2	9	4	1	7	5	8	6
8	7	4	2	6	5	3	9	1
6	1	5	8	3	9	4	7	2

crossword 212 solution.

A	L	B	U	M	S		S	U	R	E	
N		A		I		B		O		O	A
S	C	H	E	R	Z	O		B	L	U	R
W		A		A		N		E		G	E
E	W	I	N	G		N	A	R	W	H	A
R				E		I				E	
		M	O	N	S	T	E	R	S	I	N
				B				T			S
G	I	V	E	R	N	Y		A	E	S	O
A		I		O		L		R		Y	E
S	P	A	S	M		E	N	D	O	R	S
P		T		A		R		O		I	C
		B	E	R	N			E	M	P	A

Remember to submit your Outreach articles or copy by **15th March** to outreachwgk@gmail.com or leave at:
Wayside, 3 Glympton Rd.



EQUINOX, SOCKS AND SPRING VEG

On 20 March we have the spring equinox, where the position of the earth on its orbit means that there are pretty much equal hours of light and dark. It's a reason to celebrate – for the next six months, the days are longer than the nights (in the northern hemisphere anyway). And if you live in Annapolis, Maryland, USA, you can take part in the 'Burning of the Socks' festival as the milder weather means you don't need them. Socks, that is.

If you don't fancy the smell of burning sock, perhaps celebrate instead with some seasonal food. In the UK, March sees the start of the 'hungry gap' when not that much produce is harvested, but if you can make something with artichokes, beetroot, carrots, chicory, leeks, parsnip, purple sprouting broccoli, radishes, rhubarb, sorrel, spring greens, spring onions or watercress, you'll be on the right track. Chuck in some spring lamb and it might even be tasty. You'll find some of these seasonal goodies in Wootton Stores – so do pop in!

Melanie Waldron

WOOTTON VILLAGE HALL TALKS

Our next speaker at 7.30pm on Friday March 10th is

MARTIN JENNINGS, one of the country's leading sculptors of celebrated figures.. His sculptures of great writers and poets are widely admired and include Sir John Betjeman at St Pancras Station, Philip Larkin in Hull, Charles Dickens in Portsmouth and George Orwell outside BBC Broadcasting House.

Celebrated people from the medical profession have also featured prominently, with John Radcliffe in Oxford, Sir Archibald McIndoe the reconstructive surgeon, in East Grinstead and Mary Seacole, the Jamaican nurse, outside St Thomas's Hospital in London. His sculpture of Prime Minister, Stanley Baldwin, stands in Bewdley, Worcestershire, while a seated figure of actor, Ronnie Barker, is in Aylesbury.

In January, **PATRICK WOODROFFE**, Creative Director for The Rolling Stones and many other rock stars, gave an amusing and insightful talk about the challenges when lighting stadiums and other venues for rock concerts, ballet, opera and musical

theatre. Patrick told us he hesitated when asked to design lighting for the opening and closing ceremonies of the London Olympics in 2012 - but he finally took the job, knowing several billion people would be watching, and it proved a resounding success. He also read moving passages from his diary when he had worked with Michael Jackson on what was to be the most remarkable show ever conceived - rehearsals were completed just two days before Michael died. The sold-out evening, with 100 in the hall, raised over £700 for the Ukraine Appeal

JACK STRAW, former Foreign Secretary, gave a highly illuminating talk in February on the complicated relationship between the UK and Iran, dating back decades. In 2001, he was the first Foreign Secretary since the 1979 revolution to visit Iran and it further kindled his interest in this complex country, which led to the publication of his acclaimed book, *The English Job* - with 34 copies sold following his talk. The evening raised a further £958 for the Ukraine Appeal - just a few days before the first anniversary of Russia invading that tragic country - making a total of about £5,000 raised at the Talks in the past 12 months

Entry is £10 in cash - and includes free food from Jayne Day and

Amanda Salter, with her delicious rocky-roads. Wine and soft drinks are available for a modest donation.

To reserve seats, please contact us through our website

www.woottontalks.co.uk

(Children over 16 welcome)

**ALL PROCEEDS TO THE DEC
UKRAINE HUMANITARIAN APPEAL**

Recent risk assessment has shown that the village hall meets all the current government safety standards for indoor community spaces - but we would encourage those attending to wear a face-covering

Andy Morgan
01993 813016



CRAFT FAIR
WOOTTON
BY WOODSTOCK
SUNDAY 2 APRIL
11AM - 4PM

VILLAGE HALL
Church St. OX20 1DZ

£2 CASH ENTRY AND RAFFLE
Profits to Disasters Emergency Committee
for the Turkey - Syria Earthquake Appeal

ART / CERAMICS / SKINCARE / JEWELLERY / GIFTS /
CHILDRENS CLOTHES / STATIONERY AND MORE
REFRESHMENTS AVAILABLE



WOODSTOCK U3A

Our last speaker, Russell Cherry (2 February) took us along home turf of the Ridgeway and other 'green roads'; Nick Brazil (2 March) is due to whisk us off to 'Chile and Easter Island' before Hugh Warwick (6 April) brings us home with 'Hedgehogs'.

A new printed programme listing all 2023 events should now be in public libraries etc. The same information is at:

<https://u3asites.org.uk/woodstock>. or via Facebook @woodstocku3a.

Chris Sladen



TIME TO GET GROWING

FRUIT, VEG & FLOWERS
FOR THE 2023
WOOTTON FLOWER SHOW

The Flower Show is open to everyone who has connections to the Parish of Wootton.

You don't have to have green fingers to enter - we extend an extra warm welcome to newcomers who would like to take part in this traditional village event! Look out for the Show Guides coming through your letterbox in Spring for full details.

2023 classes include:

Potatoes	French Beans	Herbs	Plums
Carrots	Runner Beans	Potatoes	Rhubarb
Leeks	Beetroot	Runner beans	
Parsnips	Marrows	Chillies	
Courgettes	Pumpkins	Sweetcorn	
Onions	Cucumbers	Apples	
Shallots	Tomatoes	Pears	



WOOTTON FLOWER SHOW
9TH SEPTEMBER 2023



Ambiance

beauty

www.ambiancebeauty-woodstock.com
07934123931

Microdermabrasion
Clinicare Targeted Facials
NYR Facial & Massage Therapies
Advanced Waxing
Eleebana Lashlifts
The Manicure Company Gel Polish
and more.....

W.R.I.N.

HELP IN TIME OF NEED!

Many people and families may need financial help. Particularly as it could be some time before Government grants are received.

If you have a specific need **Wootton Relief in Need Charity** may be able to give you a Grant.

Please do not feel hesitant, or reluctant to apply for help. Your application will be treated in strict confidence.

If you would like further information, or wish to make an application, please contact:

Joan Thomas: phone 812354

Alternatively if you know of anyone who has a specific need, please pass on this message.



Bicester Wills & Probate

- Standard Single Will - £225
- Standard Mirror Wills - £325
 - Bloodline Wills - £625
- Lasting Power of Attorney
Property & Financial Affairs - £325
- Lasting Power of Attorney
Health & Welfare - £325
- Both Lasting Powers of Attorney - £500
- Probate Assistance from - £1,500
- Pre-paid Funerals Plans - from £1,700

Gail and the Team
offer a friendly
estate planning
service



Come in and see us
3-5 Causeway, Bicester
Oxon OX26 6AN
or phone
01869 226760

gail@bicesterwills.co.uk
www.bicesterwills.co.uk

Leigh Edwards Solicitors

DIVORCE AND FAMILY LAW SPECIALISTS

Specialists in divorce, separation, children
matters, pre and post nuptial agreements

friendly sensible service
easy parking

for a free initial consultation call

tel: **01993 703272**

www.leighedwards.com

Authorised and
Regulated by the
Solicitors Regulation
Authority

14 Market Square,
Witney, Oxon OX28

Leigh Edwards Solicitors is a trading name of Lee Chadwick Solicitors LLP

PELLMANS

Your Local Solicitors

- **Business and Employment Law**
Contracts, Legal Compliance and Disputes
- **Property**
Buying and selling homes, Investment
Property, Commercial and Agricultural
- **Divorce**
Finances, Children and Cohabitation Disputes
- **Wills, Probate and Trusts**
Tax Planning and Lasting Powers of Attorney

01865 884400

www.pellmans.co.uk

1 Abbey Street, Eynsham, Oxford OX29 4TB

Home visits and evening appointments

available



KEDGEREE BRUNCH AT
THE BRIDGE BAR
12TH FEBRUARY 2023

Neghat and Malcolm would like to thank all those who supported this charity event in aid of Wootton Conservation Trust. Forty people attended the lunch, where they were served a dish of Kedgerree with a green side-salad (or a vegetable pilau) and a mango mousse desert.

The event was well received, as was the availability of drinks and the raffle of a bottle of Laurent Perrier Champagne. The ticket was drawn by Stephen Jones our retired vicar, and the winner, who does not like bubbles, kindly re-donated the bottle which was then won by a guest who had travelled from

London to support the event. This was a convivial and fun occasion which had a lively village community feel to it. A significant sum was raised for the charity, and the Bridge Bar benefitted from the good turnout. Neghat and Malcolm would like to say a special thank you to: WCAST for providing the venue Rachel and Sage Jones for their hard work and support Our friend Famida, for providing the vegetarian option Dominic Knight – our helper extraordinaire Our silver brigade team of helpers from afar.

Neghat & Malcolm.

STONESFIELD
GARDENING CLUB

Do you have an interest in gardening? Stonesfield Gardening Club meet regularly to discuss all aspects of horticulture.

Our next speaker is Mandy Bradsaw a Cotswold based journalist specialising in Gardening. Her talk on the 13 March - 7.30 at the St James Centre, High St, Stonesfield is "Beyond the Garden Gate", which is Mandy's guide to less well known but lovely Gardens in the Cotswolds.

You are very welcome to come along, our guest fees are £3.00 per talk.

Gaye Oleson

WWW.Stonesfieldgardening.info

West End, Wootton by Woodstock Toad Crossing



Common toads are declining in the UK. Thousands are killed crossing roads each spring as they make their way to breeding ponds that they have used for generations

Can you spare some time to help local toads cross a road?

Volunteers are needed to help Wootton toads cross West End Road, and patrol on mild, wet evenings in February and March.

If you are interested, please contact:

woottontoads@gmail.com

All you'll need for patrolling is warm clothes, something reflective, a bucket and a torch. You can take part as little or as often as you like.



The Big Breakfast



Glympton Village Hall
Sunday 26th March

9am to 12.00

Take Away Available



Jerrams Brothers Funeral Directors

*33 High Street,
Woodstock, OX20 1TE
(01993 811491)*

- *Private Chapel of Rest*
- *24 hour personal family service*
- *Pre-Paid funeral plans*

As the third generation of a funeral directing family, Nicholas and Benjamin Tonks believe that, at a time of bereavement, compassion and the family's wishes are paramount. In partnership with the Church and the community we endeavour to give the bereaved as much care and support as possible.



WOODSTOCK CHIROPRACTIC CLINIC

Providing quality chiropractic care since 1983



We use a range of manual techniques, such as joint manipulation, mobilisation, dry needling acupuncture and rehabilitation exercises to help relieve many common spinal problems. Alongside chiropractic treatment, we also offer physiotherapy and massage.



For further information or to make an appointment please call **01993 811815**, or visit our website **www.woodstockchiropractic.co.uk** and 'Like us on Facebook' for news, offers and appointment availability.

LOCAL CONTACT PEOPLE

Rector	Position vacant	
Licensed Reader	Mrs Jenny Wagstaffe	01993 811027
Churchwarden: Wootton	Mr Nicholas Tomlinson	01993 813484
Churchwarden: Glympton	Lt. Col. Peter Browne Mrs Connie Surtees	01608 658017 01993 812076
Churchwardens: Kiddington	Mrs Jo Deacon Mr Howard Dellar	07917 158274 07540 704056.
Verger: Wootton	Mrs Jane Scott	01993 813236
PCC Secretary	Mrs Ann Leggett	01993 813005
Baby & Toddler Group - Chair:	Ms Clare Potter	07921 120068
Bell Ringers - Tower Captain:	Mr Mel Leggett	01993 813005
Glympton Village Hall - bookings:	Mrs Serena Warmington	01993 811486
Glympton P.O. & Stores	Mrs Serena Warmington	01993 811486
Parish Council - Chairman:	Mr John Harwood	johnharwood.wpc@gmail.com
- Clerk:	Ms Chris Hoad	clerkwpc0@gmail.com
Police - Community Support Officers	Sgt's. Payne and O'Hare, PC Rob Webb and PCSO 9356 Helen Duffield	24 hour "non-urgent" incident line 101 mob. 07980 764756 email: helen.duffield@ thamesvalley.police.uk
Village Hall (Booking admin):	Mrs Caroline Bateman	cazb44@btinternet
Wootton Community And Sports Trust (WCAST) Chair Sec.	Rachel Jones Natalie Mitchell-Boorne	woottoncast@gmail.com
Wootton Conservation Trust: Chair Local contacts:	Mr Phil Parker Mr Ed Taylor	07771 893046 edward@roberttaylorandson.com
Wootton Flower Show – Sec.	Natalie Mitchell-Boorne	07971 638136
Wootton School - Head Teacher	Mrs Lauren Murrey	01993 811520
Wootton Stores	Mrs Rachel Jones	01993 811474
Wootton Relief in Need	Mrs Joan Thomas Mrs Jane Hoare	01993 812354 01993 813026
"Outreach" Editor e-mail address	Mel Leggett	01993 813005 outreachwgk@gmail.com
Advertising Manager	Ms Fran Gardner	07971 469940
Treasurer	Mr Neil Scott	01993 813236

Should you, or someone else, be on this list?? Please let the editor know of any omissions or corrections.

Wootton Village Pop Up Tea Room

Will be Open - Saturday 11th March



10.30 -12.00

in Wootton Church

Come along and enjoy

Homemade Cakes Tray Bakes

Freshly Baked Scones

Fresh Brewed Italian Coffee, Tea,

Hot Chocolate, Soft Drinks

Children's Craft
and Play Area



Glympton Village Shop

- Groceries
- Italian Leather Handbags
- Silver and fashion Jewellery
- Pretty Scarves
- Candles and Diffusers
- Freshly Ground Coffee

Post Office Services & Products available

- Banking
- Free Cash Withdrawals
- Cash Deposits (for most Banks)
- Cheque Deposits
- Postal Services
- ParcelForce

POST
OFFICE

Shop Opening hours

Mon, Tues, Thurs, Fri 9am – 5pm

Wed 9am -1pm

Post Office Opening hours

Mon–Fri 9am-12noon



TELEPHONE 01869 340202 FAX 01869 340074

DOMESTIC HEATING OILS—FARM FUELS
BOILER MAINTENANCE—TANK REPLACEMENT

DANSAM HOUSE, 29 WORTON ROAD, MIDDLE BARTON
CHIPPING NORTON, OXON OX7 7EE

EMAIL: sales@ackermanandniece.co.uk



WOOTTON STORES

Run for the community by the community

Our opening hours,
currently, are:

Monday-Friday

8.00 - 1.30 & 3.00 - 7.00

Saturday 8.00 - 12.00

Sunday 9.00 - 11.00



☎ 01993 811474

or- email: manager@woottonstores.org.uk