

NEWSLETTER FOR THE VILLAGES OF WOOTTON, GLYMPTON AND KIDDINGTON

# *Outreach*



OCTOBER 2023

**THE KILLINGWORTH CASTLE**

*Supper Club*

EVERY THURSDAY 6-7PM

*Two course dinner for two £35pp  
includes a bottle of house wine per couple*

BOOK ONLINE: [WWW.THEKILLINGWORTHCASTLE.COM](http://WWW.THEKILLINGWORTHCASTLE.COM)

**THE KILLINGWORTH CASTLE**

**OPEN ALL DAY, TUES-SUN**

REAL ALES • BAR MENU • A LA CARTE & TASTING MENUS  
BEER GARDEN • CAR PARK • 8 LUXURY BEDROOMS

Glympton Road, Wootton near Woodstock, Oxfordshire, OX20 1EJ  
01993 811 401    @thekillingworth    [www.thekillingworthcastle.com](http://www.thekillingworthcastle.com)

**YOUR RELIABLE LOCAL**

# PRINTER

**BANNERS POSTERS SIGNAGE VEHICLES**  
**...and all other types of print**

**01865 372982**  
[jdpsolutions.co.uk](http://jdpsolutions.co.uk)

4 Station Field Industrial Estate, Kidlington, Oxford, OX5 1JD

# D

IFFICULT  
TIMES...



Many of you will be aware that Cherwell Graphics, in Kidlington, who have printed Outreach "for ever", have ceased trading. Clive Tomkins, the owner, has generally taken responsibility for our printing personally, and we have enjoyed exceptional service at what we always guessed was a very competitive rate.

We're now all *too* aware of just *how* competitive!!!

After seeking a number of quotations both locally and on-line, we have decided to go forward with JDP Solutions on Station Field Industrial Estate, as you enter Kidlington. (*For those who think like me, "Opposite Screwfix"*)

They are a small company, keen to take on our business, close enough to provide a personal service, at a reasonable price.

*However....* to continue, we will have to cope with an increase of around 50% in our printing costs!

Hopefully, as the time to renew with us comes round, our advertisers will accept the new rates and stay with us, but advertising income accounts for less than half our annual income. If you are one of our "Friends of Outreach" or think you might like to become one, I'd ask you to consider our plight when making your donations.

We will, naturally, be working hard to find ways of maintaining our bank balance.

In the meantime, we hope you continue to enjoy reading about what's happening in the villages and contributing photos, news and articles for inclusion.

*Mel and the Outreach team.*

## **This month's cover ..**

The Flower Show, of course - Millie Bee - alias Amanda Salter.

Please keep the photos coming in - ***everyone***; Remember...

Outreach depends on **YOUR** contributions.

**If you have events, clubs, sports, activities - anything at all, please get in touch and we'll see what we can do.**

**Deadline for the November edition - 15th October :**

**email to [outreachwgk@gmail.com](mailto:outreachwgk@gmail.com)**

*Mel*

THE PARISH OF WOOTTON,  
GLYMPTON AND KIDDINGTON



OCTOBER  
SERVICES

Sunday 1st	10.15am	St Mary's, Wootton	Pet Service
Sunday 8th	10.15am	St Mary's, Glympton	Parish Communion
Sunday 15th	10.15am	St Mary's, Wootton	Parish Communion
Sunday 22nd	10.15am	St Nicholas, Kiddington	Parish Communion
Sunday 29th	4pm	St Mary's, Wootton	All Souls Service

**S**ERVICE OF  
COMMEMORATION

Each year we hold a service of commemoration at All Souls tide, to remember before God all who have died and to comfort one another as we find ways to live without their presence with us.

This year it is at St. Mary's, Wootton on Sunday 29th October at 4pm.

During the service we read out names that we have been asked to remember and offer each other the space to light a candle in memory of loved ones who are no longer with us.


You will need to let me know if you would like any names included, even if you are unable to join us in church.

*Connie Surtees*

Email: [conniesurtees36@msn.com](mailto:conniesurtees36@msn.com)

**V**OLUNTEERS  
NEEDED!

During the year, in many areas of Wootton churchyard, grasses and wildflowers are allowed to grow, providing an environment for butterflies, moths, other insects and small mammals to live.

It is necessary to cut everything down once a year, usually late summer/early autumn. Ann and I have tackled the front part of the churchyard over the past few weeks, using a strimmer/light brushcutter, raking everything up and transferring it to the churchyard compost heap. What we would love is for some volunteers to take on areas of the rear churchyard, to do the same. You would need a robust strimmer or similar. Do as much or as little as you feel able – any help will be 



valued.

If you feel you could help, please contact Ann on [anncleggett@gmail.com](mailto:anncleggett@gmail.com) or text to 07522 326706. Many thanks.

*Mel Leggett.*

### Wootton Village Pop-Up Tea Room

**Saturday 21st October**

**10.30 - 12.00**

**in Wootton Church**



Come along and enjoy

**HOMEMADE CAKE, TRAYBAKES**

**FRESHLY BAKED SCONES**

**TEA, FILTER COFFEE**

**and SOFT DRINKS**

## Pet Service

*on Sunday,  
1st October  
10.15 - 10.45 am*

*at St. Mary's  
Church,  
Wootton*



*A service of thanks and blessing,  
followed by refreshments.  
In the churchyard (in church if wet).  
Bring your pet, a toy, or a picture.  
Everyone very welcome - even without a pet!*



**The Big Breakfast**  
**Glympton Village Hall**  
**Saturday 15<sup>th</sup> October**  
**9am to 12 pm**

**TAKE-AWAY  
AVAILABLE**



# WOOTTON VILLAGE HALL TALKS

Mensun Bound, world-famous marine archaeologist, gave a captivating talk in September about the expedition which led to the rediscovery of the Endurance, the ship in which Sir Ernest Shackleton and a crew of 27 men sailed for the Antarctic. The ship sank after being crushed by the ice on November 21st 1915 - but it was only rediscovered by Mensun and his team in March 2022

The village hall was packed with 120 in the audience and the evening raised 830 Pounds for the Ukraine Humanitarian Appeal. As a mark of our appreciation, a couple of bottles of wine were presented to Mensun by Daphne Dorman, the great-niece of Ernest Shackleton. Our next speaker at 7.30pm on Friday October 13th is TOM FORT, the celebrated writer and broadcaster who has written a range of gentle best-selling books on subjects such as fishing, the weather, eels and village life, as well as punting across England and a journey along the A303 (both of which were also made into highly entertaining films for BBC Four) Tom's latest book is called Rivets, Trivets and Galvanised Buckets - Life in a Village Hardware Shop (a Book of the Week in the Sunday

Times) and it chronicles the time his daughter-in-law took over a century-old hardware shop. Interweaving the evolution of the shop, its previous owners, the customers it serves and the items it sells, the book offers a study of community and shines a light on the eccentricities of ordinary people. Alongside, it presents a fascinating history of technological development - from who thought of screwdrivers to where the spirit level came from, who devised the process of galvanisation and what genius worked out that a suction pad on the end of a piece of wood could unblock sinks.

Tom's social history of angling, called Casting Shadows, was a Book of the Year in both The Times and Sunday Times and Max Hastings described it as "a wonderful and unsnobbish history of angling by a master fisherman". Jeremy Paxman found it "marvellous"

Entry is £10 in cash - and includes free food featuring delicious rocky-roads. Wine and soft drinks are available for a modest donation. A card machine will be available if you wish to buy Tom's books To reserve seats for Tom's talk, as well as other speakers booked until next February, please contact us through our website

[www.wootontalks.co.uk](http://www.wootontalks.co.uk)  
(Children over 16 welcome)  
ALL PROCEEDS TO THE DEC  
UKRAINE HUMANITARIAN APPEAL

*Andy Morgan*

# WOOTTON FLOWER SHOW

On behalf of the Flower Show committee, I would like to pass on our sincere thanks to everyone who helped make this year's event so special. Whether you stacked a chair, baked a cake or manned a stall, your support is greatly appreciated.

To those of you who bought a raffle ticket, donated a bottle or contributed in any way, our thanks again. It's your generosity that keeps the show going every year. The committee only ever tries to cover our own costs and if there is a profit (once our treasurer has run the numbers), we will be donating to local causes. If you are involved in a local group which would benefit from a donation, we would love to hear from you. Please get in touch, or come along to our AGM.

The committee is also very keen to get your thoughts on The Show. What works well? What works less well? What else would you like to see on the day? There will be a suggestion box in Wootton Stores where you can share your thoughts (anonymously, if you like). You would also be most welcome to email us or post on our Facebook page. We are especially keen to see more exhibits in the marquee and will be reviewing the list of categories. We'd love to hear any

ideas you have that might get more people involved in entering more classes.

We hope you enjoyed this year's show. The committee has been greatly heartened by the way the various interests in the village have come together this summer. It's a huge challenge to host an event like this whilst ensuring everyone feels their views and concerns are being fairly represented.

This year's AGM will be held in the Village Hall on Tuesday 17th October at 7:30pm. We would love to see you there.

*Martin Eastaugh*  
*Chair of Wootton Flower Show*  
woottonflowershow@gmail.com

## PARISH COUNCIL NEWS

After its summer break, the parish council met on 4 September. It will meet monthly during the autumn, so the next meeting will be on Monday 2 October at 7.30 in the Village Hall.

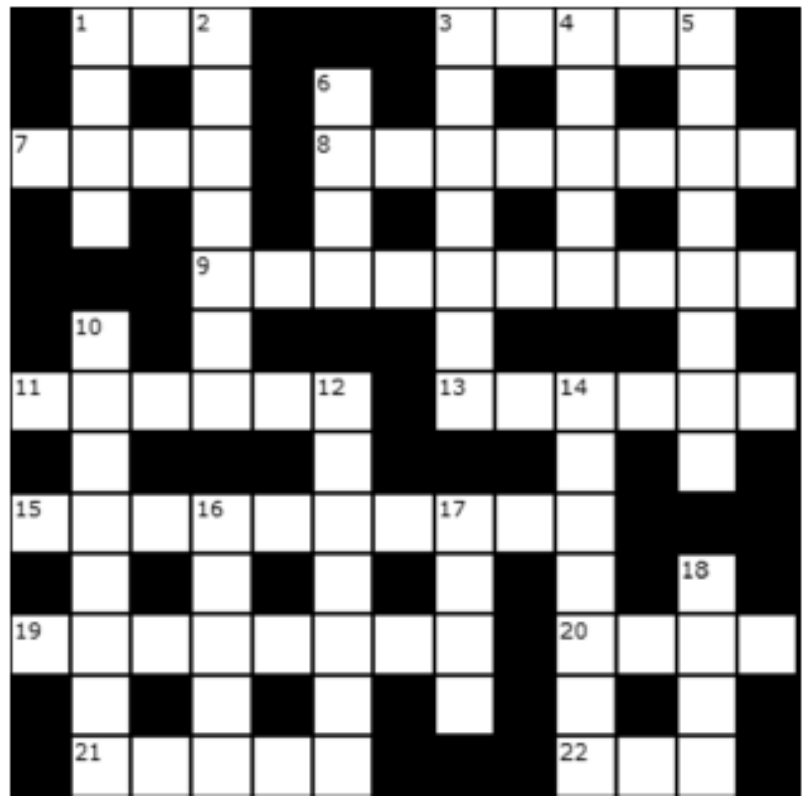
### GRASS CUTTING

The contractor cutting the verges and roadside foliage completed his work in late August and did a good job coping with the volume of cuttings that needed to be removed. He has been booked to do a further cut in October, to avoid things getting too overgrown before winter. We are shortly inviting

**THE "OUTREACH" CROISSANT CROSSWORD — No. 220**

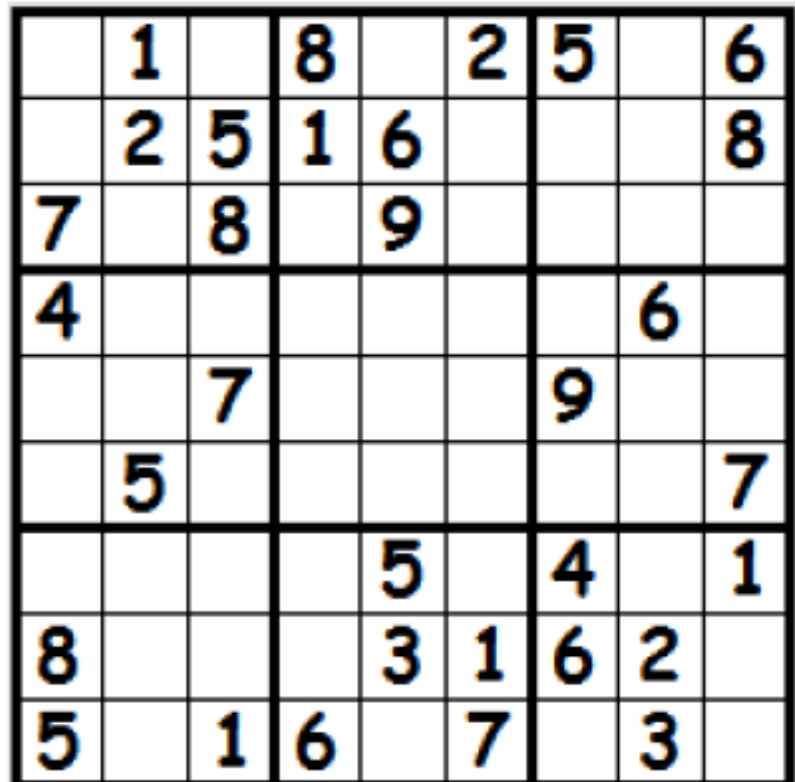
*Across*

- 1) River in Somerset and Devon (3)
- 3) Articles (5)
- 7) US military vehicle (4)
- 8) Ocean (8)
- 9) Trifling (10)
- 11) Stefan ....., Swedish former tennis player (6)
- 13) Condescends (6)
- 15) Bypass (10)
- 19) Resign (4,4)
- 20) Pleased (4)
- 21) Salad plant (5)
- 22) Rend (3)



*Down*

- 1) Pitcher (4)
- 2) Wipe out (7)
- 3) Meteorological event that blows nobody any good (3,4)
- 4) Boredom (5)
- 5) Pre-decimal coin (8)
- 6) Group (4)
- 10) Sea between Italy and Balkan peninsula (8)
- 12) Frolics (7)
- 14) Whole number (7)
- 16) Small wood (5)
- 17) Sicilian volcano (4)
- 18) Freshwater fish (4)



**Last month's winner, September, was ... SUE ROSS - Congratulations!**

Commiserations to those not lucky this time.... don't give up!

Completed puzzles should be handed in at Wootton or Glympton Stores, with your name and phone number, before the 15th of the month. The first correct answer drawn after the 15th of the next month will win four croissants.

Outreach is grateful to WOOTTON STORES for their continued generous support.



tenders for the contract next year and we very much hope he will be willing to put in a quotation. Our thanks to those local residents who helped to keep the grass and verges under control while we were trying to find a contractor.

#### WOOTTON RELIEF IN NEED

The parish council is responsible for appointing some of the trustees on the Wootton relief in Need charity. Following Ann Day standing down and Simon Heighes completing his term of office, the council has reappointed Dr Heighes for a further four year term, and appointed Mrs Carry Yanni to succeed Ann Day. We are grateful to both of them for taking on this role.

#### BURDITCH BANK

There is growing concern about the state of the diseased ash trees growing in between Burditch bank and the main Glympton road. The fear is that at some stage large parts of these trees might fall into the road. Unfortunately, it appears that the land on which the trees have grown is legally not highway land and thus is not maintained by the county council. Moreover, neither the parish council nor those who live along the road own the land. Dealing with the trees is thus very difficult. We are exploring whether there is a way the parish council could intervene to take responsibility for the maintenance of

the hedge, and we will report on this at our next meeting. In the meantime, we have urged to county council to see what it could do to make the trees safe.

Next meeting

The NEXT MEETING will be on  
Monday 2 October

*John Harwood (Chair)*

## S WAG UPDATE

We have been waiting for confirmation of the timetable for the second round of consultations by the developers Photovolt Development Partners (PVDP). We now understand from WODC that PVDP will not be starting any further consultations until later in the autumn, and that a further booklet of information will be sent to everyone by PVDP before any public consultations commence. We believe that this further delay arises from the fact that PVDP were told firmly by the Planning Inspectorate that they needed to do more work in relation to their Scoping Report, including providing a Preliminary Environmental Impact Report. In related news, on 5 September the House of Commons debated amendments to the Energy Bill, which is nearing the end of its progress through Parliament. One of the amendments states that the Government requires clear and

convincing evidence from any solar PV applicant with an existing or planned project under the NSIP regime that the components of the proposed scheme, including solar PV panels and battery storage, have not been manufactured using “forced labour”. It is suggested that failure to provide the evidence required should lead to rejection of the scheme being proposed. Another amendment recommends that the development of solar farms of more than 500 acres should be prohibited where that land includes more than 20% of what is called “Best and Most Versatile” agricultural land. We await the outcome of these two proposed amendments.

*Miles Tuely*



## **S**TONESFIELD GARDENING CLUB

Local garden designer Lorraine Brodrick came to talk to us in September, when she urged us to think carefully about how to adapt our gardens to the changing

climate. This will include using suitable plants that cope well with the hotter summers that we have, as well as not minding wetter winters. Silver foliage plants have hairy leaves to deflect sun, and rudbeckias and helenium are happy in the heat. Mediterranean plants like Salvia, Euphorbia, Phlomis and the hardy herbs like Rosemary, Sage and Thyme will all cope well. We can also adapt the old ways of doing things, like, for example, leaving Dahlias in the ground rather than lifting and storing them for winter. Lorraine also covered ways we can adapt our gardens when we find we can no longer do as much as we used to! She suggests thinking about paving – size and levels, making sure it is not a trip hazard. Raised beds are a good thing to consider, especially with in-built seating at the side.

Lorraine suggested we should not ignore the possibilities of vertical gardening, green walls, especially with watering systems incorporated to make them more manageable. And in the beds, remember that shrubs and perennials need less looking after than annuals.

Then there are helpful gadgets now on the market, such as lightweight retractable hoses and long-reach tools. All in all, a lot to think about

for us all.

October's meeting, on Monday 9th October 7.30pm St James' Centre, will be a talk about Wine Growing in a Changing Climate, which will also feature a wine tasting. As we have a limited capacity for this, ***tickets will need to be booked in advance.***

*Diane Bates*

*Secretary Stonesfield Gardening  
Club*

[www.stonesfieldgardening.info](http://www.stonesfieldgardening.info)

Parish of Wootton, Glympton, and Kiddington

## **H**ELP WITH FINANCIAL PROBLEMS

Thanks to the generosity of some parishioners, we are able to offer grants to anyone who is experiencing financial difficulty. Please contact the Vice Chairman of the PCC, Peter Browne, on 01608 658017 or by email: [brownepd49@gmail.com](mailto:brownepd49@gmail.com) giving family details and a summary of your financial commitments.  
**HELP IN TIME OF NEED**

## **S**UCCESS WITH "FROSTY FIELDS"

I've been lucky enough to have had a photograph accepted for the latest exhibition in the garden gallery of the Oxfordshire Museum in Woodstock, on the theme of 'Discovery'. The photo, of tall grasses, was taken in the meadows here in Wootton on a frosty winter's morning and is entitled 'Regular Walk'.

If you've never been to the Museum, or haven't visited for a while, it's well worth a trip – it has a café and a lovely, peaceful garden. The exhibition is free, as is the Museum itself, and it runs between 16th September and 5th November, 2023.



*Heather Allson*

# WOOTTON FLOWER SHOW



## WOOTTON FLOWER SHOW 2023 - TROPHY WINNERS

- The Maude Marriott Silver Cup - Marlene Fisher  
most points in fruit section
- The Frank Marriott Silver Cup - Andy Deller  
most points in vegetables section
- The Len Humphries Silver Cup - Jamie Llewelyn  
grower of the heaviest pumpkin
- The Ponsonby Cup - Maria Young  
outstanding entry in cut flowers
- The Wootton Trophy - Maria Young  
most points in fruit, vegetables & flowers
- The Hordley Rose Bowl - Marlene Fisher  
outstanding floral art
- The Eleanor Smith Silver Cup - Amanda Salter  
most points in homecraft section
- The Pam & Stephen Jones Trophy - Amanda Salter  
outstanding entry in homecraft
- The Centenary Cup - Hazel Rhodes  
outstanding handicraft exhibit
- The Johnson Art Cup - Alicia Rogers  
outstanding painting or drawing
- The Claire Stott Trophy - Harriet Mitchell-Boorne  
outstanding handicraft (aged 11-15)
- The Mickey Lewis Cup - Willow Llewelyn  
outstanding handicraft (aged 5-10)
- The Brian Davis Trophy - Janet Mead  
best limerick
- The Thelma Kydd Salver - David Knight  
outstanding photograph of Wootton
- The Margaret Campbell Silver Cup - Lillian Lawrence  
most points (aged 8-15)
- The Val Day Silver Cup - Albie Cooke-Day  
most points (aged under 8)
- The Wootton Family Tankard - The Waldrons  
family with most points in all classes





# WOULD YOU LIKE ANY GUISERS?

I know it's really annoying for today's children and teens when adults harp on about how things were better 'in my day...'. However, there is one thing I do think was better, in my day, and that's Halloween. 'Trick-or-treating' had not yet reached Fife; instead, we went guising. We dressed up and knocked on doors, politely asking, 'Would you like any guisers?' when/ if they were opened. We then had to do some kind of performance in order to earn our treats – a song, a joke, or a short sketch. Much better.

What maybe wasn't so great was that pumpkins were another thing that hadn't yet reached Fife. No – we had to carve out what we called turnips (you probably call them swedes), with a sturdy teaspoon and an enormous amount of perseverance. Several blisters later we could produce something vaguely resembling a lantern, which as an added bonus gave off a pungent aroma as the candle burnt the lid.

Anyway, if you're looking for some sweets and chocolates to hand out to any Halloween guisers, or trick-or-treaters, Wootton Stores has plenty, so do pop in. You might just be lucky enough to pick up a turnip too! I mean swede!

*Melanie Waldron*



**WOOTTON STORES**  
*Run for the community by the community*

Our opening hours, currently, are:

**Monday-Friday**  
**8.00 - 1.30 & 3.00 - 7.00**

**Saturday** 8.00 - 12.00

**Sunday** 9.00 - 11.00

 01993 811474

or- email: [manager@woottonstores.org.uk](mailto:manager@woottonstores.org.uk)



# D S JONES

BUILDING, ROOFING

&

PROPERTY MAINTENANCE

All aspects of building, roofing and property maintenance undertaken

For all enquiries call or email

07496149990

dsjmaintenance@hotmail.com

Instagram: @dsjonesbuilding

**NOAHSARK**  
Painting  
Company

SIMPLY BEAUTIFUL DECORATION

All forms of interior and exterior painting and decorating, specialising in murals.



T: 01295 811026

E: pete@noahsarkpainting.co.uk

W: noahsarkpainting.co.uk

Pebsham Cottage, Aynho Road, Adderbury  
Oxfordshire, OX17 3NL

Physiotherapy clinic  
& Pilates studio

A helping hand  
to get you back to health

CHIPPING  
NORTON  
PHYSIO

Tucked away between the Old Mill Coffee House and the Methodist Church on West Street, we offer a full treatment programme to get you back to health.

Manipulation	Low back pain
Acupuncture	Sports-related injuries
Massage	Neck pain
Ultrasound	Muscle injury
Manual Therapy	Joint pain
Pilates exercise	Post-op re-hab

Visit our website for more info about our Physiotherapy treatments and for our timetable of Pilates exercise classes.

CHIPPING  
NORTON  
PHYSIO

Chipping Norton Physio  
Lectern Hall, West Street  
Chipping Norton OX75LH  
T 01608 645 608  
E physio@chippingnortonphysio.com  
www.chippingnortonphysio.com/

*Katrina Moss*

Inner Peace Reiki Treatment  
in the comfort of your own home.

Level 2 Reiki practitioner.

Treatment and public liability  
insurance.

Reiki complementary healing  
can be beneficial in many ways.

Please contact me for a  
consultation

01993 891131 / 07824357690

katrinamoss1979@icloud.com

## DIRTY CARPETS, UPHOLSTERY, RUGS



**Most carpets  
dry within the  
hour**

**Unbeatable  
results,  
removes  
almost all  
spots & stains**

**Call**

**GRIMEBUSTERS**

**01993 868924 01865 726983**

**www.grimebusters.co.uk**

## P ARROTT & LEE FOUNDATION

The Parrott & Lee Educational Foundation (one of Wootton's registered charities) offers grants to young people completing secondary education. The purpose of the grants, which are usually of around £300 a year, is to help local young people embark on a career.

Grants may be used to help towards college course fees, apprenticeships, maintenance, travelling, or specialist equipment. Grants are also given for those going to university.

Applicants must be

(i) under 25, and

(ii) former pupils of Wootton School and/or residents of the historic parish of Wootton (which sadly does not include Glympton or Kiddington).

More details are on the application forms available from Wootton Stores. Applications will be considered at the next meeting of the Trustees in early November.

Now that the school has closed, the school buildings revert to the ownership of the Foundation and the trustees are beginning to think about what to do with them. If you know of an organisation which is interested in renting the buildings please let me know.

*John Harwood  
Chair of Trustees*



# WOODSTOCK & DISTRICT U3A

The speaker at our September meeting, Professor Steve Tonkin, hit on a topical and important theme: his talk 'Right Light at Night' amply illustrated the environmental and health hazards posed by our apparent addiction to high level artificial light. Our taste for round-the-clock activity can be shown to involve serious environmental damage and to be associated with propensity to heart disease, obesity and cancers. There are economic consequences, too: around 25 per cent of our street lighting, for example, is wasted by being upwardly directed. Coming up next we have local

speaker, Chrissie Harper, on 'Chrissie's Owls and Stonesfield Owl Rescue': will she be bringing some of her feathered friends with her? Come along and find out: Thursday 5th October, 2 p.m., St. Hugh's hall, Hensington Road, Woodstock; non-members, as always, most welcome as visitors. As always, the Branch's score of individual interest groups continue to beaver away, their activities ranging from Art to Singing, from Board Games to Science. The Play Reading Group, which, post-COVID, has continued to meet alfresco, recently tackled one or two 20th century West End dramas and allegedly has been asked if they might find something less exciting, since passers-by were becoming agitated.

*Chris Sladen*



**Ambiance**  
beauty

www.ambiancebeauty-woodstock.com  
07934123931

Microdermabrasion  
Clinicare Targeted Facials  
NYR Facial & Massage Therapies  
Advanced Waxing  
Eleebana Lashlifts  
The Manicure Company Gel Polish  
and more.....



**Bicester Wills & Probate**

- Standard Single Will - £225
- Standard Mirror Wills - £325
  - Bloodline Wills - £625
- Lasting Power of Attorney Property & Financial Affairs - £325
- Lasting Power of Attorney Health & Welfare - £325
- Both Lasting Powers of Attorney - £500
- Probate Assistance from - £1,500
- Pre-paid Funerals Plans - from £1,700

Gail and the Team offer a friendly estate planning service

Home visits no extra charge!!

Come in and see us  
3-5 Causeway, Bicester  
Oxon OX26 6AN  
or phone  
01869 226760

[gail@bicesterwills.co.uk](mailto:gail@bicesterwills.co.uk)  
[www.bicesterwills.co.uk](http://www.bicesterwills.co.uk)

## ***Jerrams Brothers Funeral Directors***

***33 High Street,  
Woodstock, OX20 1TE  
(01993 811491)***

- *Private Chapel of Rest*
- *24 hour personal family service*
- *Pre-Paid funeral plans*

As the third generation of a funeral directing family, Nicholas and Benjamin Tonks believe that, at a time of bereavement, compassion and the family's wishes are paramount. In partnership with the Church and the community we endeavour to give the bereaved as much care and support as possible.



## **WOODSTOCK CHIROPRACTIC CLINIC**

*Providing quality chiropractic care since 1983*

*We use a range of manual techniques, such as joint manipulation, mobilisation, dry needling acupuncture and rehabilitation exercises to help relieve many common spinal problems. Alongside chiropractic treatment, we also offer physiotherapy and massage.*

For further information or to make an appointment please call **01993 811815**, or visit our website **[www.woodstockchiropractic.co.uk](http://www.woodstockchiropractic.co.uk)** and 'Like us on Facebook' for news, offers and appointment availability.



## BUBBLES IN WOOTTON OCTOBER 14TH

Come and have fun at an evening of  
bubbles, fizz and canapes  
in Wootton Village Hall

Enjoy a talk from a Master of Wine as you sample a number of  
different wines to see which most appeals to you.

To allow for catering and because numbers will be limited  
please purchase your tickets from Wootton Stores by Saturday  
September 30<sup>th</sup>

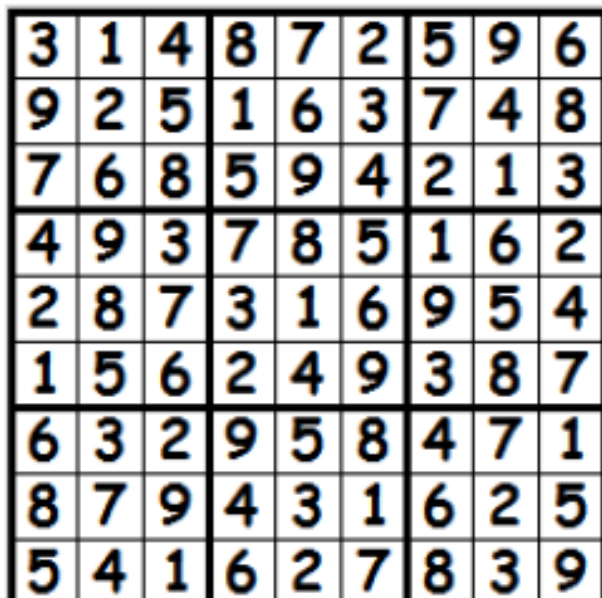
Tickets cost £25 per head

Proceeds will go towards improvements in Village Hall facilities

Crossword No 219 solution



Sudoku page 7



Leigh Edwards Solicitors

## DIVORCE AND FAMILY LAW SPECIALISTS

Specialists in divorce, separation, children  
matters, pre and post nuptial agreements

friendly sensible service

easy parking

for a free initial consultation call

tel: 01993 703272

[www.leighedwards.com](http://www.leighedwards.com)

14 Market Square,  
Witney, Oxon OX28

Authorised and  
Regulated by the  
Solicitors Regulation  
Authority

Leigh Edwards Solicitors is a trading name of Lee Chadwick Solicitors LLP

# T HEATRE REVIEWS



As promised last month, I thought I'd do a quick summary of some of the productions I have enjoyed most this year at the theatre. All of these have been such a success that they are having their runs extended so you will be able to get tickets for most - although most have moved from their original theatres.

This year's standouts for me started with

My Neighbour Totoro - at the Barbican (originally brought about by Wootton resident Miranda Curtis in her role at the RSC) - it's beautiful, magical and a production for the whole family - and it's coming back to the Barbican this Christmas. (Watch the Studio Ghibli cartoon on Netflix in preparation)

Guys and Dolls - at the Bridge Theatre. Now, I am not really a musical fan but this is the best thing I have seen for months! It was joyful, excellent acting, singing, choreography (Arlene Phillips) and it's a 'promenade' production - so you can almost be involved in the action. Whilst watching the stages move up and down, rotate, you walk round and watch! It has been extended 2x (5\* reviews from everyone) and ends in February 2024.

Hamnet - at the Garrick theatre. I saw this in Stratford and it was an

excellent adaptation of the much-loved book. Personally I preferred the play! Beautifully adapted by Lolita Chakrabarti (Life of Pi) - full of action and fun as well as more reference to Will S and his life in London. Sadly the Garrick isn't such an intimate theatre so I'm not sure how it will translate, but....

The Motive and the Cue - transferring to the Noel Coward Theatre. Sam Mendes wrote this about a very famous production of Hamlet on Broadway - with John Gielgud directing Richard Burton. It's a great play for those interested in 'making' theatre - and the performance by Mark Gatiss as Gielgud is spectacular. The play is perhaps a little 'niche'

The Empress - Stratford Swan - this is a lovely neat play (inevitably slightly contrived) about a young Indian nanny brought to England in the 19th Century to look after children, but abandoned, and Queen Victoria's relationship with Abdul Karim - also from India. Very interesting political story - beautifully acted and buzzing with life. Will move to London next

Dear England - National Theatre - By James Graham - one of the very best young writers today (Sherwood, An Uncivil War). About Gareth Southgate rallying the English Football team. It is hilarious and poignant at the same time - a very clever combination - with Joseph Fiennes and an

excellent cast. Full of joy, movement and interesting observations of well-known public figures.

Moving to the West End

The Effect - National Theatre - by

Lucy Prebble (Succession/I Hate

Suzy) Another of our best

young writers, who chooses such

unusual topics. This is ostensibly

about an antidepressant drug

trial but is actually an analysis of

what LOVE is, how relationships

develop and psychiatry.

Amazing acting by two of my

favourite young actors Paapa

Essiedu and Taylor Russell.

Spellbinding minimalist staging and

incredibly thought provoking.

Finally - this is the time to start

thinking about your Christmas

family outings!

Why not forget about PANTO for a

change (except for our unbeatable

CHIPPIE one of course)

I always look for different - but

magical - shows - good for

everyone in the family Here are a

few -

RSC Stratford - The Box of Delights

by John Masefield

RSC Barbican - My Neighbour

Totoro

National Theatre - The Witches by

Roald Dahl ( should be amazing!)

Creation Theatre Oxford - A

Christmas Carol

*Kathy Gabattiss*

# PELLMANS

## Your Local Solicitors

- **Business and Employment Law**  
Contracts, Legal Compliance and Disputes
- **Property**  
Buying and selling homes, Investment Property, Commercial and Agricultural
- **Divorce**  
Finances, Children and Cohabitation Disputes
- **Wills, Probate and Trusts**  
Tax Planning and Lasting Powers of Attorney

01865 884400

[www.pellmans.co.uk](http://www.pellmans.co.uk)

1 Abbey Street, Eynsham, Oxford OX29 4TB

**Home visits and evening appointments**

**available**

## LOCAL CONTACT PEOPLE

Rector	Revd Dr John Reader	01993 812543
Licensed Reader	Mrs Jenny Wagstaffe	01993 811027
Churchwarden: Wootton	Mr Nicholas Tomlinson	01993 813484
Churchwarden: Glympton	Lt. Col. Peter Browne Mrs Connie Surtees	01608 658017 01993 812076
Churchwardens: Kiddington	Mrs Jo Deacon	07917 158274
Verger: Wootton	Mrs Jane Scott	01993 813236
PCC Secretary	Mrs Ann Leggett	01993 813005
Baby & Toddler Group - Chair:	Ms Clare Potter	07921 120068
Bell Ringers - Tower Captain:	Mr Mel Leggett	01993 813005
Glympton Village Hall - bookings:	Mrs Serena Warmington	01993 811486
Glympton P.O. & Stores	Mrs Serena Warmington	01993 811486
Wootton Parish Council - Chairman:	Mr John Harwood	johnharwood.wpc@gmail.com
- Clerk:	Ms Cathy Fleet	clerkwpc0@gmail.com
Police -  Community Support Officers	Sgt's. Payne and O'Hare,  PC Rob Webb and  PCSO 9356 Helen Duffield	24 hour "non-urgent" incident line 101 mob. 07980 764756 email: helen.duffield@ thamesvalley.police.uk
Village Hall (Booking admin):	Mrs Caroline Bateman	cazb44@btinternet
Wootton Community Chair And Sports Trust (WCAST) Sec.	Rachel Jones Natalie Mitchell-Boorne	woottoncast@gmail.com
Wootton Conservation Trust: Chair  Local contacts:	Mr Phil Parker  Mr Ed Taylor	  07771 893046 edward@roberttaylorandson.com
Wootton Flower Show – Sec.	Natalie Mitchell-Boorne	07971 638136
Wootton School -		01993 811520
Wootton Stores	Mrs Michele Glanville.	01993 811474
Wootton Relief in Need Chair  "Outreach" Editor  e-mail address  Advertising Manager  Treasurer	Mr Simon Heighes  Mel Leggett  Ms Fran Gardner  Mr Neil Scott	simonheighes.wrin@gmail.com  01993 813005  outreachwgk@gmail.com  07770 324277  01993 813236

Should you, or someone else, be on this list?? Please let the editor know of any omissions or corrections.

# LYNDY CARY

---

## CORDON BLEU

OXFORD • CHELTENHAM • BATH  
THE COTSWOLDS & BEYOND

CORDON BLEU CATERING TO YOUR DOOR

07891 606873 • CONTACT@LYNDYCARY.COM • LYNDYCARY.COM

## Glympton Village Shop

- Groceries
- Italian Leather Handbags
- Silver and fashion Jewellery
- Pretty Scarves
- Candles and Diffusers
- Freshly Ground Coffee

Post Office Services & Products available

- Banking
- Free Cash Withdrawals
- Cash Deposits (for most Banks)
- Cheque Deposits
- Postal Services
- ParcelForce

POST  
OFFICE

### Shop Opening hours

Mon, Tues, Thurs, Fri 9am – 5pm

Wed 9am -1pm

### Post Office Opening hours

Mon–Fri 9am-12noon



TELEPHONE 01869 340202      FAX 01869 340074

DOMESTIC HEATING OILS—FARM FUELS  
BOILER MAINTENANCE—TANK REPLACEMENT

DANSAM HOUSE, 29 WORTON ROAD, MIDDLE BARTON  
CHIPPING NORTON, OXON OX7 7EE

EMAIL: [sales@ackermanandniece.co.uk](mailto:sales@ackermanandniece.co.uk)



**Oven  
Wizards<sup>®</sup>**  
*We clean your oven...so you don't have to*

Call today to have your oven, hob, extractor or Aga professionally cleaned.

**Andrew Zemitis**

Tel. 01865 965085, Mob. 07799 662220

E mail [andrewzemitis@ovenwizards.com](mailto:andrewzemitis@ovenwizards.com) - [www.ovenwizards.com](http://www.ovenwizards.com)